



<b>Prüfbericht-Nr.:</b> <i>Test report no.:</i>	CN25DJTF 001	<b>Auftrags-Nr.:</b> <i>Order no.:</i>	170421359	Seite 1 von 2 Page 1 of 2
<b>Kunden-Referenz-Nr.:</b> <i>Client reference no.:</i>	N/A	<b>Auftragsdatum:</b> <i>Order date:</i>	2025-06-05	
<b>Auftraggeber:</b> <i>Client:</i>	Dongguan Jingheng Electron Co., Ltd. Room 101, Building 1, No.15, Shenle 1st Road, Hengli Town, Dongguan City, 523465 Guangdong, P.R. China			
<b>Prüfgegenstand:</b> <i>Test item:</i>	LINE ARRAY SPEAKER SYSTEMS			
<b>Bezeichnung / Typ-Nr.:</b> <i>Identification / Type no.:</i>	L-ARRAY 18SA, FLX 18SA, L-ARRAY 28HA, FLX 28HA, L-ARRAY 18S, FLX 18S, L-ARRAY 28H, FLX 28H			
<b>Auftrags-Inhalt:</b> <i>Order content:</i>	EN 62368-1:2014+A11, BS EN 62368-1:2014+A11			
<b>Prüfgrundlage:</b> <i>Test specification:</i>	LVD approval			
<b>Wareneingangsdatum:</b> <i>Date of sample receipt:</i>	N/A	Detaillierte Fotodokumentation siehe Anlage zu diesem Bericht  Detailed photo documentation see appendix to this report		
<b>Prüfmuster-Nr.:</b> <i>Test sample no.:</i>	N/A			
<b>Prüfzeitraum:</b> <i>Testing period:</i>	N/A			
<b>Ort der Prüfung:</b> <i>Place of testing:</i>	N/A			
<b>Prüflaboratorium:</b> <i>Testing laboratory:</i>	TÜV Rheinland (Guangdong) Ltd.			
<b>Prüfergebnis*:</b> <i>Test result*:</i>	Pass			
<b>geprüft von:</b> <i>tested by:</i>			<b>genehmigt von:</b> <i>authorized by:</i>	
<b>Datum:</b> <i>Date:</i>	2025-08-19 <small>Signed by: Kevin He</small>		<b>Ausstelltdatum:</b> <i>Issue date:</i>	2025-08-19 <small>Signed by: Liheng Hu</small>
<b>Stellung / Position:</b>	Project Engineer		<b>Stellung / Position:</b>	Authorizer
<b>Sonstiges / Other:</b>	1) TÜV Rheinland LVD approval procedure; 2) The report is based on CB report CN25WRJN 001, no other tests were considered to be necessary. And consider the different requirement between the issued standard EN 62368-1: 2014+A11 and the newest EN 62368-1: 2020+A11 on CB report. Therefore, the product deems to fulfill the requirements of standard EN 62368-1: 2014+A11 without further tests.			
<b>Zustand des Prüfgegenstandes bei Anlieferung:</b> <i>Condition of the test item at delivery:</i>	Prüfmuster vollständig und unbeschädigt <i>Test item complete and undamaged</i>			
* Legende:	P(ass) = entspricht o.g. Prüfgrundlage(n)	F(ail) = entspricht nicht o.g. Prüfgrundlage(n)	N/A = nicht anwendbar	N/T = nicht getestet
* Legend:	P(ass) = passed a.m. test specification(s)	F(ail) = failed a.m. test specification(s)	N/A = not applicable	N/T = not tested
<b>Dieser Prüfbericht bezieht sich nur auf das o.g. Prüfmuster und darf ohne Genehmigung der Prüfstelle nicht auszugsweise vervielfältigt werden. Dieser Bericht berechtigt nicht zur Verwendung eines Prüfzeichens.</b> <i>This test report only relates to the above mentioned test sample. Without permission of the test center this test report is not permitted to be duplicated in extracts. This test report does not entitle to carry any test mark.</i>				

Prüfbericht-Nr.: CN25DJTF 001  
Test report no.:

Seite 2 von 2  
Page 2 of 2

### Anmerkungen Remarks

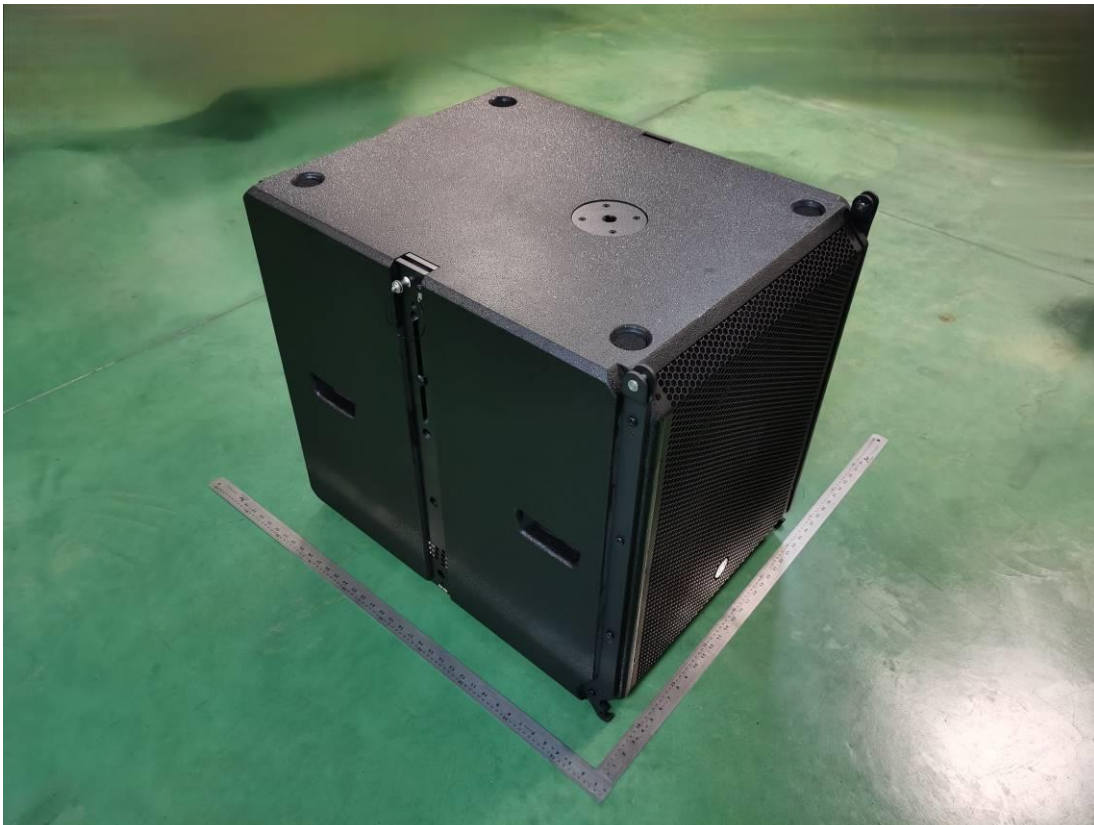
1	<p>Alle eingesetzten Prüfmittel waren zum angegebenen Prüfzeitraum gemäß eines festgelegten Kalibrierungsprogramms unseres Prüfhauses kalibriert. Sie entsprechen den in den Prüfprogrammen hinterlegten Anforderungen. Die Rückverfolgbarkeit der eingesetzten Prüfmittel ist durch die Einhaltung der Regelungen unseres Managementsystems gegeben.</p> <p>Detaillierte Informationen bezüglich Prüfkonditionen, Prüfequipment und Messunsicherheiten sind im Prüflabor vorhanden und können auf Wunsch bereitgestellt werden.</p> <p><i>The equipment used during the specified testing period was calibrated according to our test laboratory calibration program. The equipment fulfils the requirements included in the relevant standards. The traceability of the test equipment used is ensured by compliance with the regulations of our management system. Detailed information regarding test conditions, equipment and measurement uncertainty is available in the test laboratory and could be provided on request.</i></p>
2	<p>Wie vertraglich vereinbart, wurde dieses Dokument nur digital unterzeichnet. Der TÜV Rheinland hat nicht überprüft, welche rechtlichen oder sonstigen diesbezüglichen Anforderungen für dieses Dokument gelten. Diese Überprüfung liegt in der Verantwortung des Benutzers dieses Dokuments. Auf Verlangen des Kunden kann der TÜV Rheinland die Gültigkeit der digitalen Signatur durch ein gesondertes Dokument bestätigen. Diese Anfrage ist an unseren Vertrieb zu richten. Eine Umweltgebühr für einen solchen zusätzlichen Service wird erhoben.</p> <p><i>As contractually agreed, this document has been signed digitally only. TUV Rheinland has not verified and unable to verify which legal or other pertaining requirements are applicable for this document. Such verification is within the responsibility of the user of this document. Upon request by its client, TUV Rheinland can confirm the validity of the digital signature by a separate document. Such request shall be addressed to our Sales department. An environmental fee for such additional service will be charged.</i></p>
3	<p>Prüfklausel mit der Note * wurden an qualifizierte Unterauftragnehmer vergeben und sind unter der jeweiligen Prüfklausel des Berichts beschrieben.</p> <p>Abweichungen von Prüfspezifikation(en) oder Kundenanforderungen sind in der jeweiligen Prüfklausel im Bericht aufgeführt.</p> <p><i>Test clauses with remark of * are subcontracted to qualified subcontractors and described under the respective test clause in the report.</i></p> <p><i>Deviations of testing specification(s) or customer requirements are listed in specific test clause in the report.</i></p>
4	<p>Die Entscheidungsregel für Konformitätserklärungen basierend auf numerischen Messergebnissen in diesem Prüfbericht basiert auf der "Null-Grenzwert-Regel" und der "Einfachen Akzeptanz" gemäß ILAC G8:2019 und IEC Guide 115:2021, es sei denn, in der auf Seite 1 dieses Berichts genannten angewandten Norm ist etwas anderes festgelegt oder vom Kunden gewünscht. Dies bedeutet, dass die Messunsicherheit nicht berücksichtigt wird und daher auch nicht im Prüfbericht angegeben wird. Zu weiteren Informationen bezüglich des Risikos durch diese Entscheidungsregel siehe ILAC G8:2019.</p> <p><i>The decision rule for statements of conformity, based on numerical measurement results, in this test report is based on the "Zero Guard Band Rule" and "Simple Acceptance" in accordance with ILAC G8:2019 and IEC Guide 115:2021, unless otherwise specified in the applied standard mentioned on Page 1 of this report or requested by the customer. This means that measurement uncertainty is not taken in account and hence also not declared in the test report. For additional information to the resulting risk based of this decision rule please refer to ILAC G8:2019.</i></p>

Product: LINE ARRAY SPEAKER SYSTEMS

Type Designation: See test report



Picture 1. Model L-ARRAY 18SA

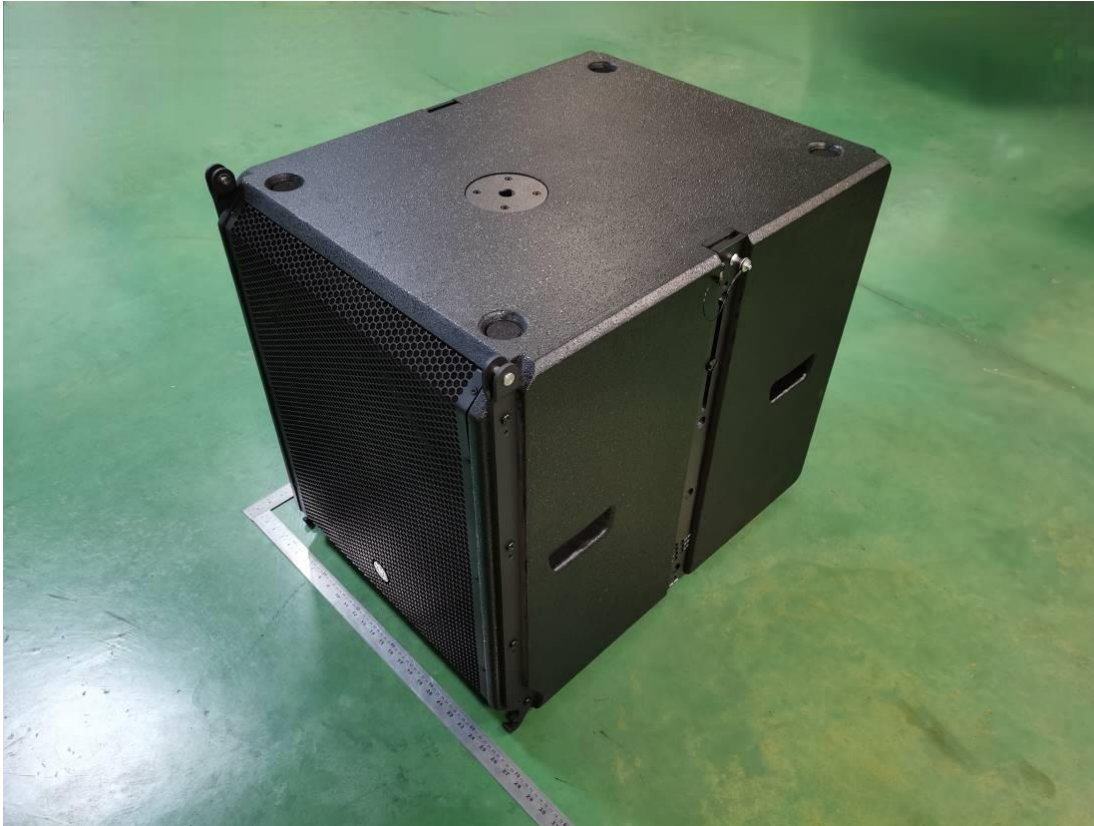


Picture 2.



Product: LINE ARRAY SPEAKER SYSTEMS

Type Designation: See test report



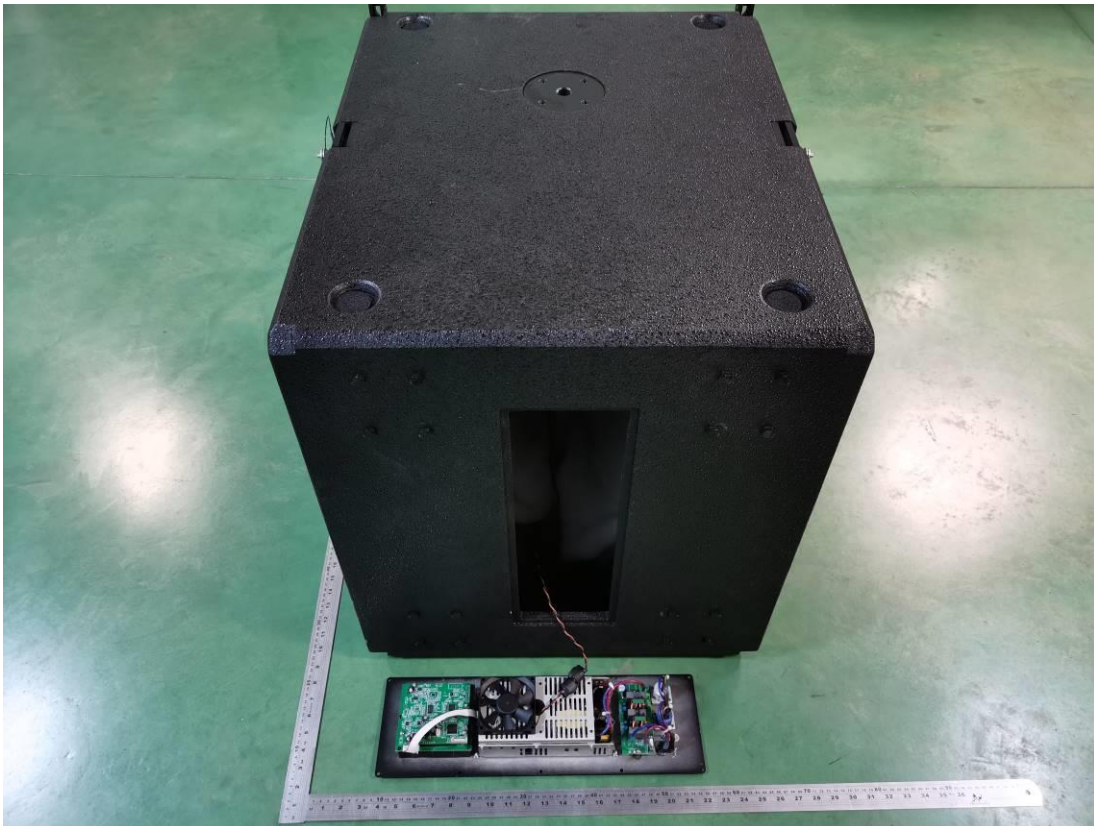
Picture 3.



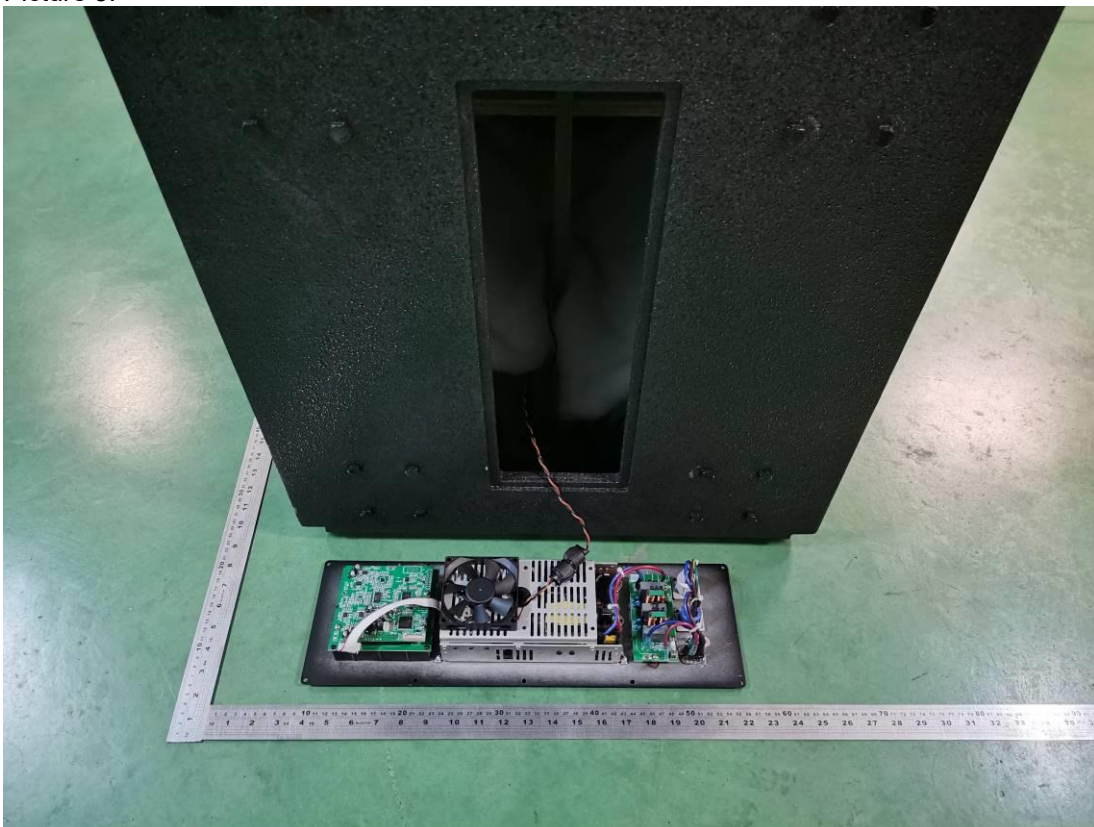
Picture 4.

Product: LINE ARRAY SPEAKER SYSTEMS

Type Designation: See test report



Picture 5.

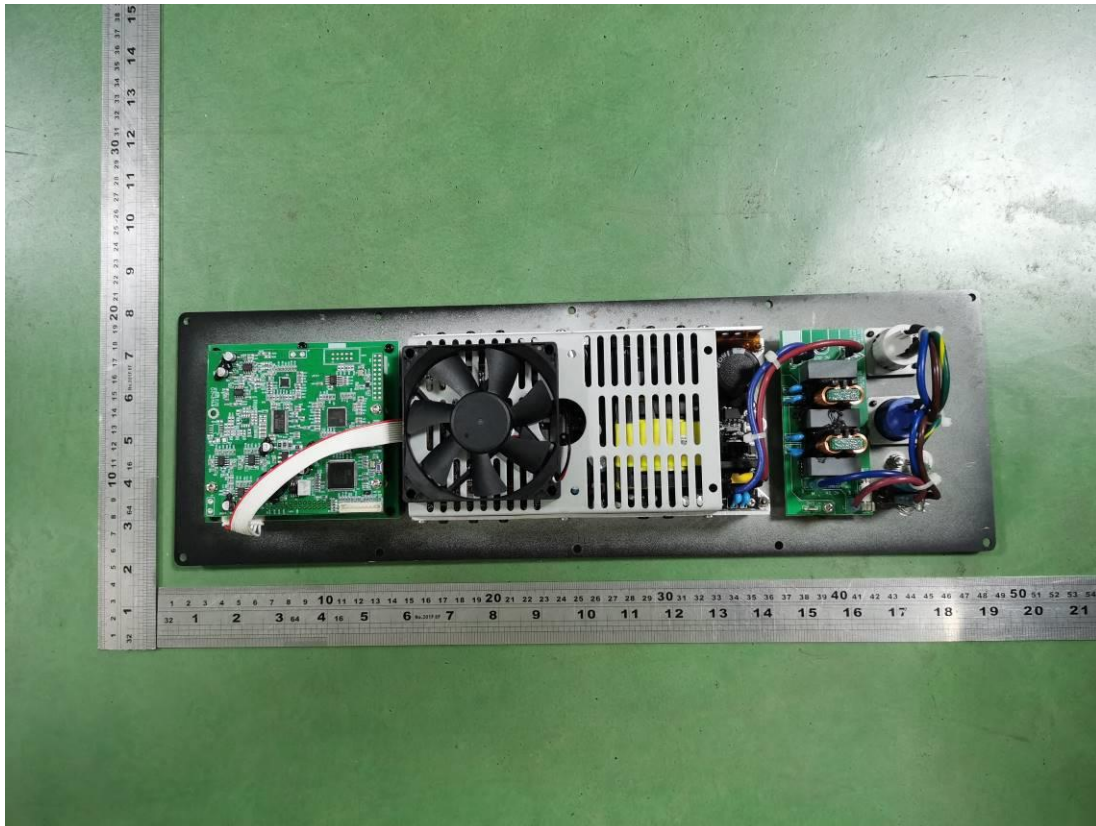


Picture 6.



Product: LINE ARRAY SPEAKER SYSTEMS

Type Designation: See test report



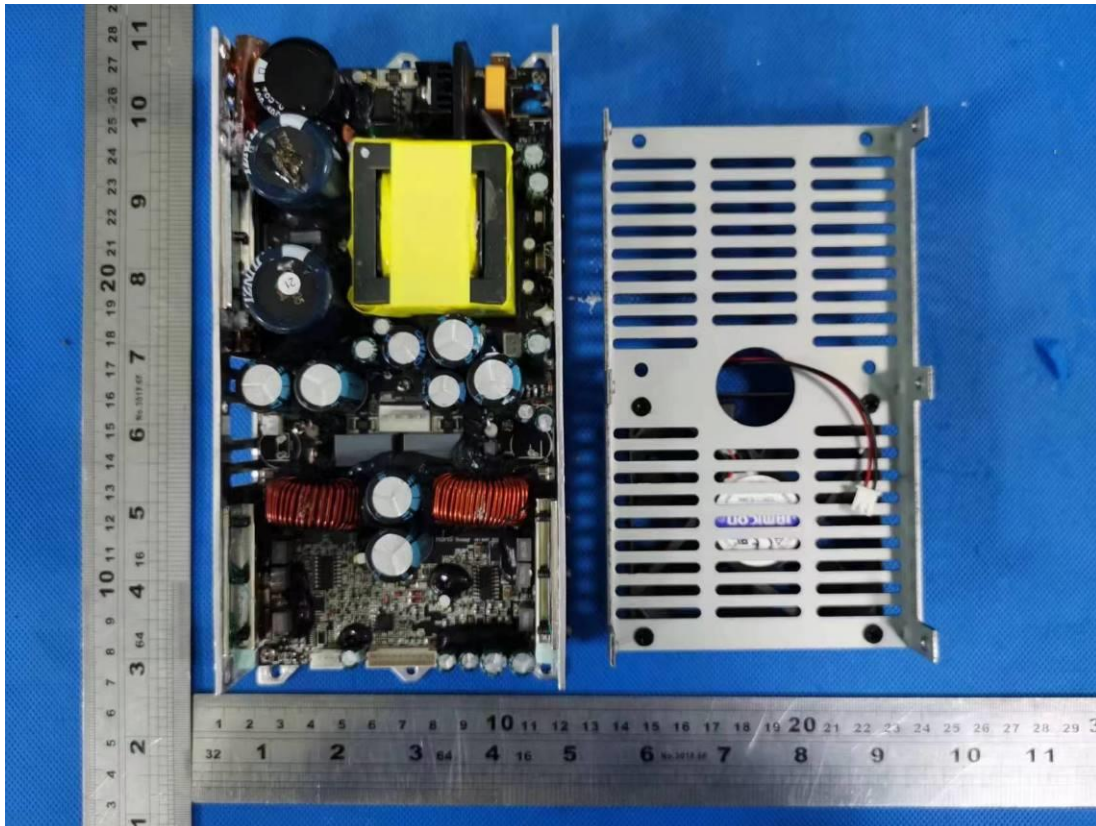
Picture 7.



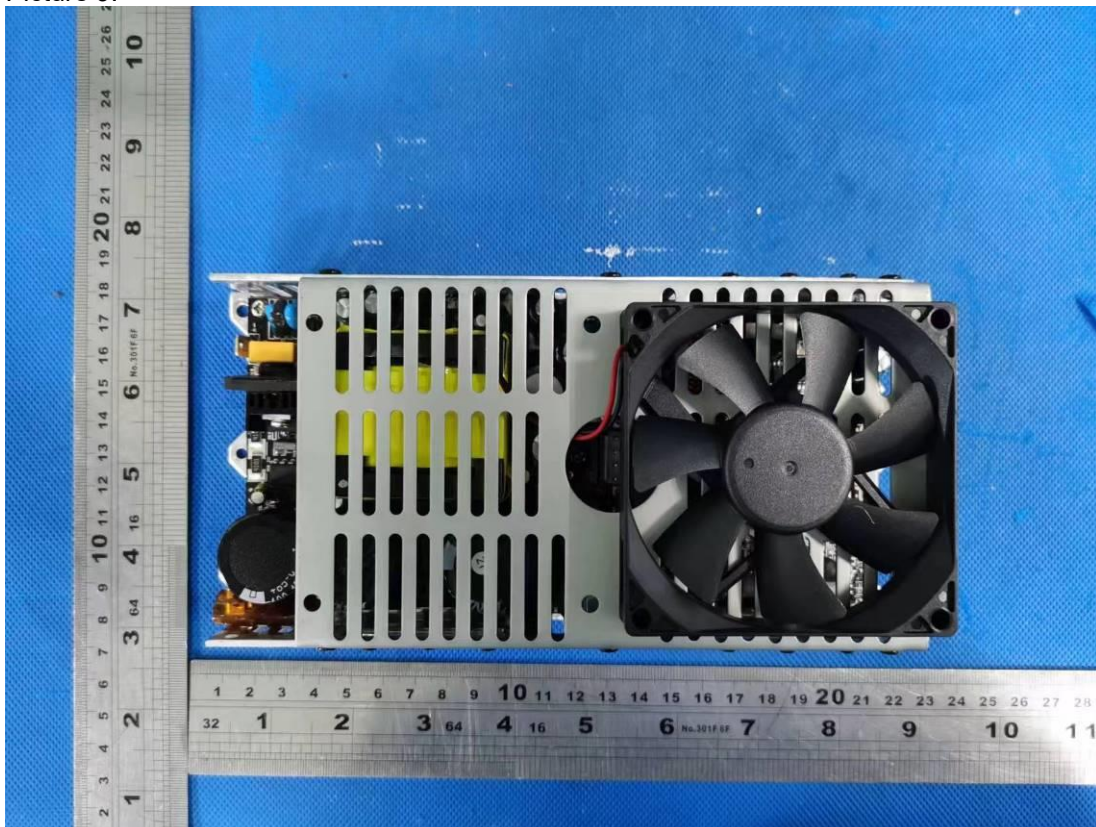
Picture 8.

Product: LINE ARRAY SPEAKER SYSTEMS

Type Designation: See test report



Picture 9.

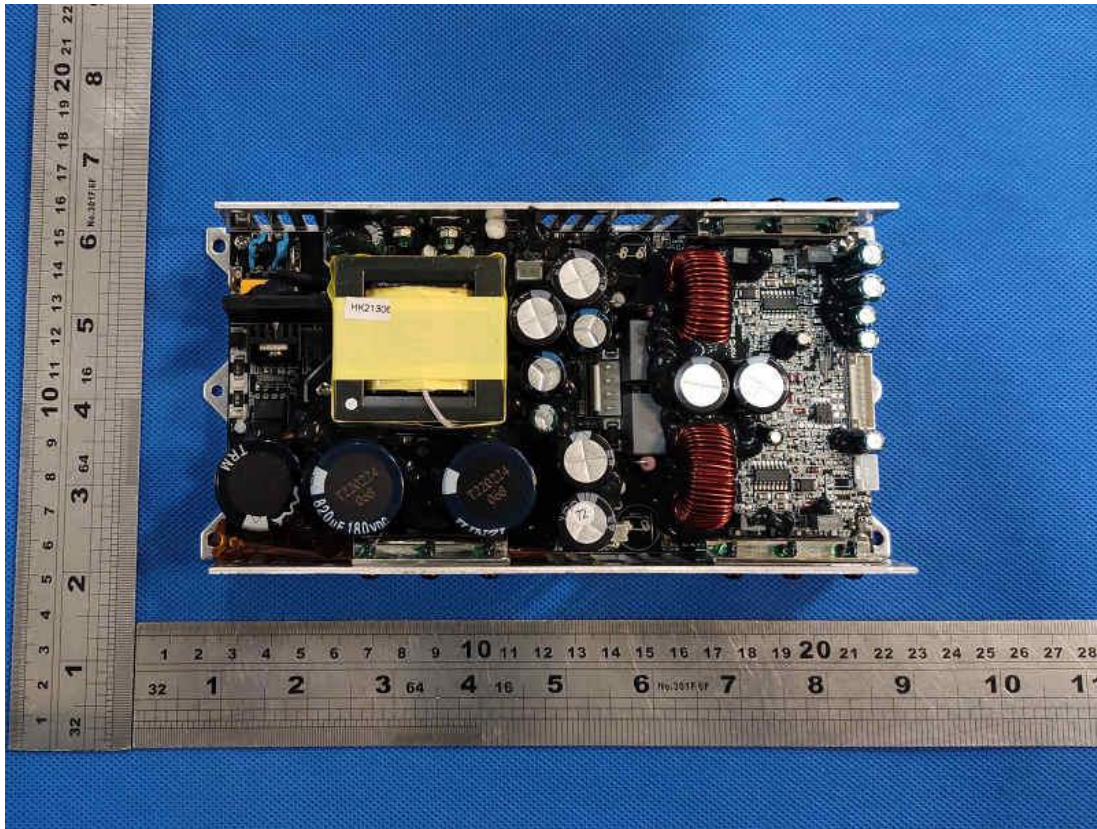


Picture 10.

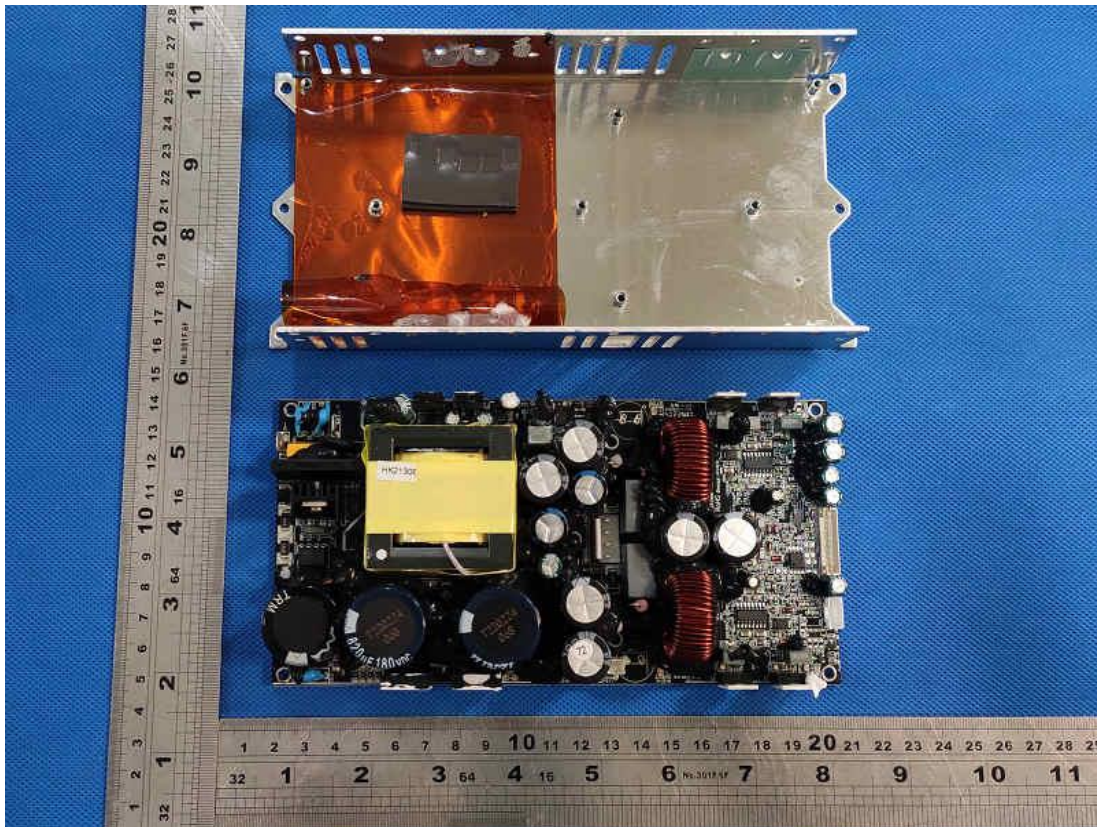


Product: LINE ARRAY SPEAKER SYSTEMS

Type Designation: See test report



Picture 11.

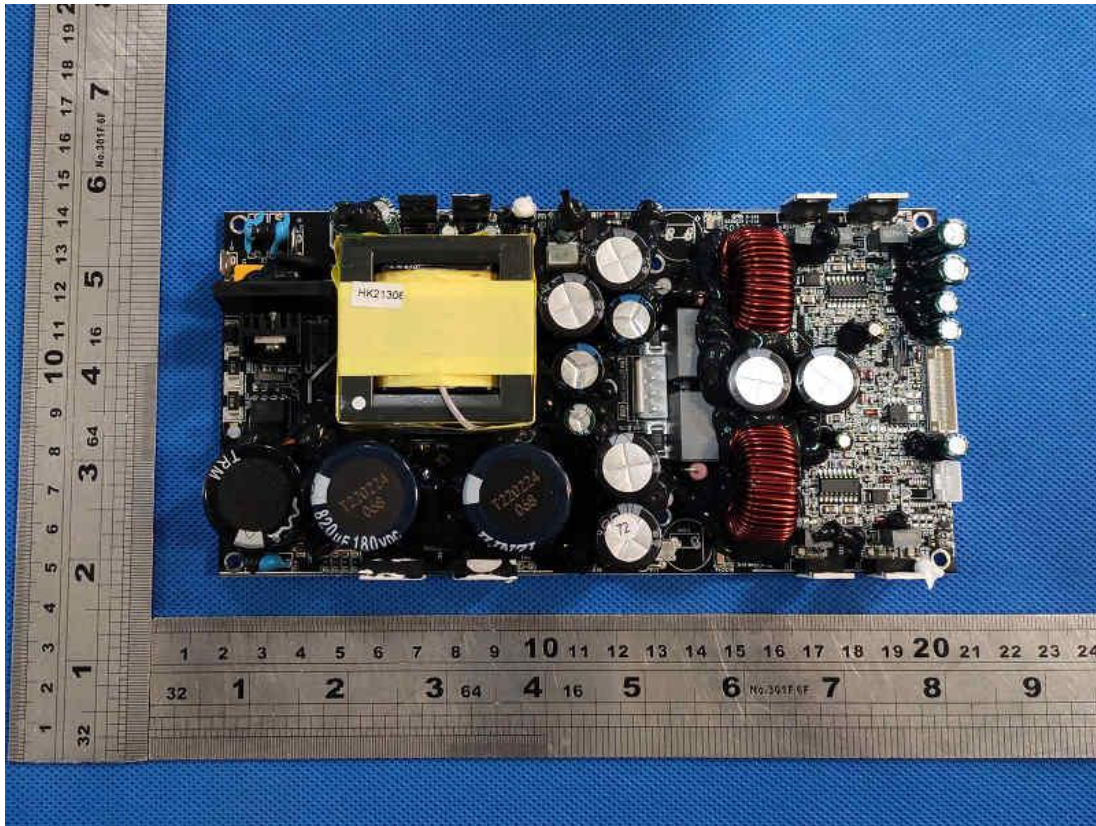


Picture 12.

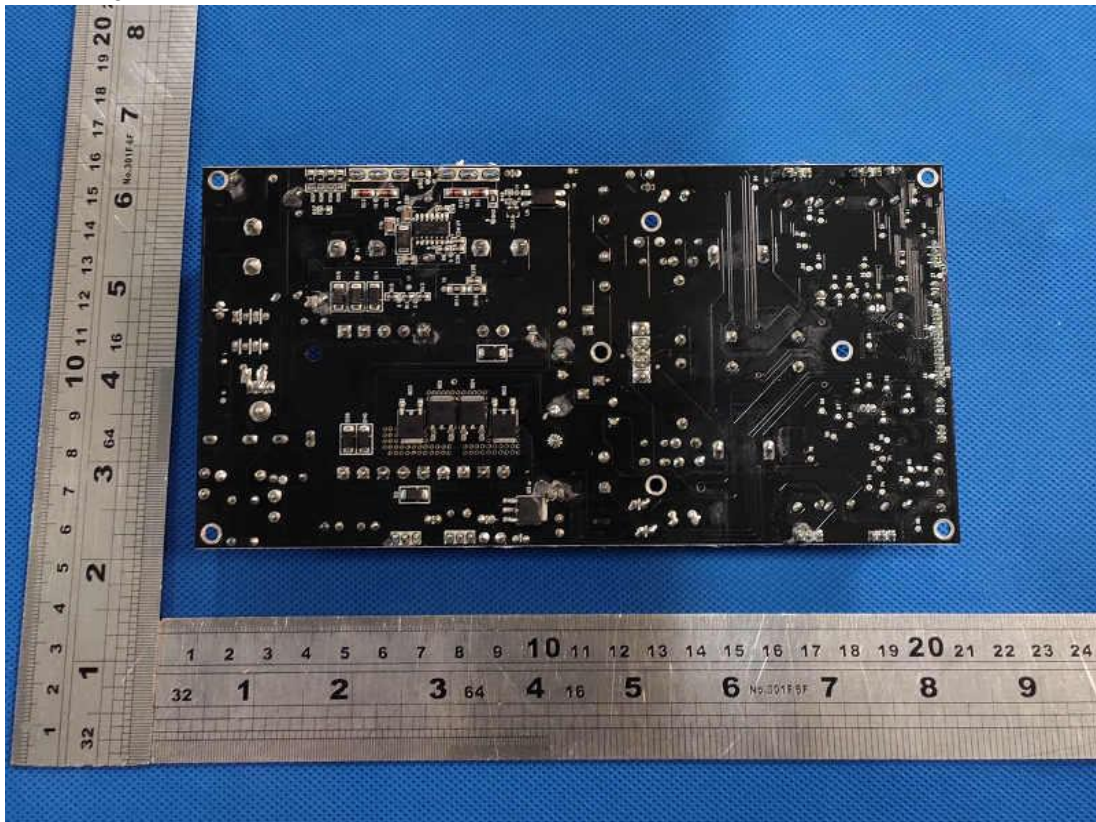


Product: LINE ARRAY SPEAKER SYSTEMS

Type Designation: See test report



Picture 13.



Picture 14.

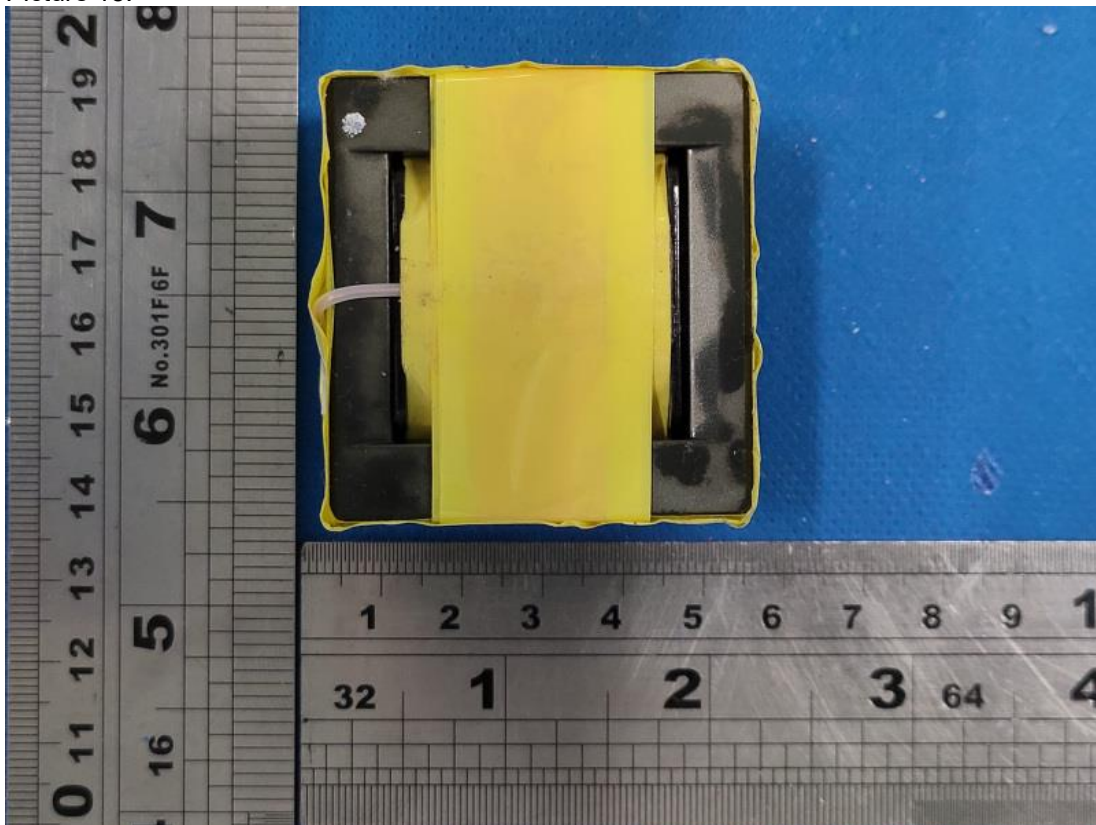


Product: LINE ARRAY SPEAKER SYSTEMS

Type Designation: See test report



Picture 15.

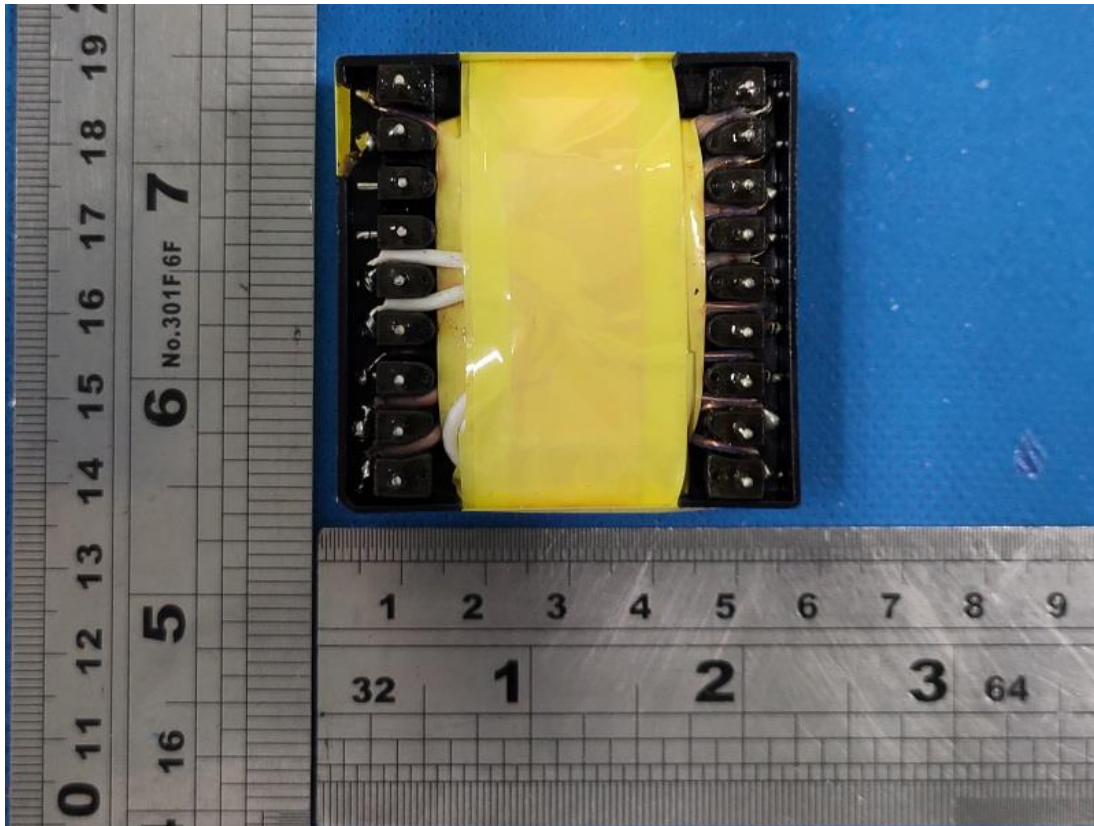


Picture 16.

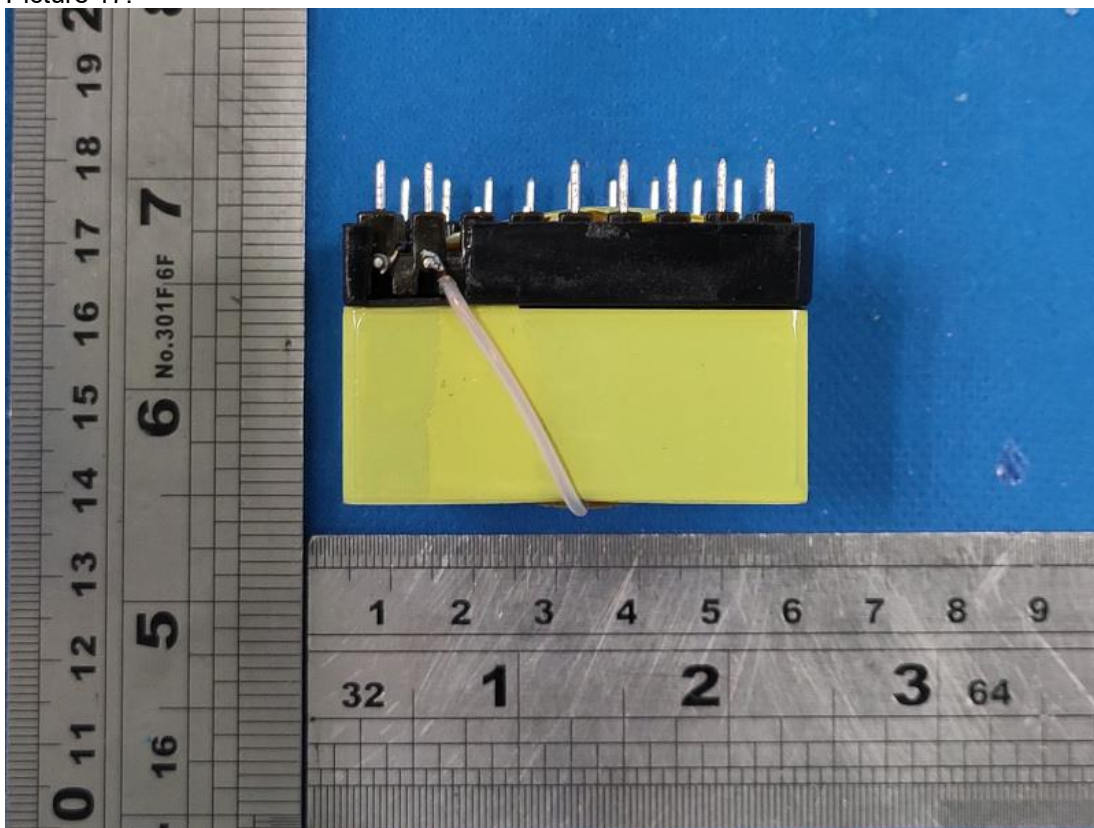


Product: LINE ARRAY SPEAKER SYSTEMS

Type Designation: See test report



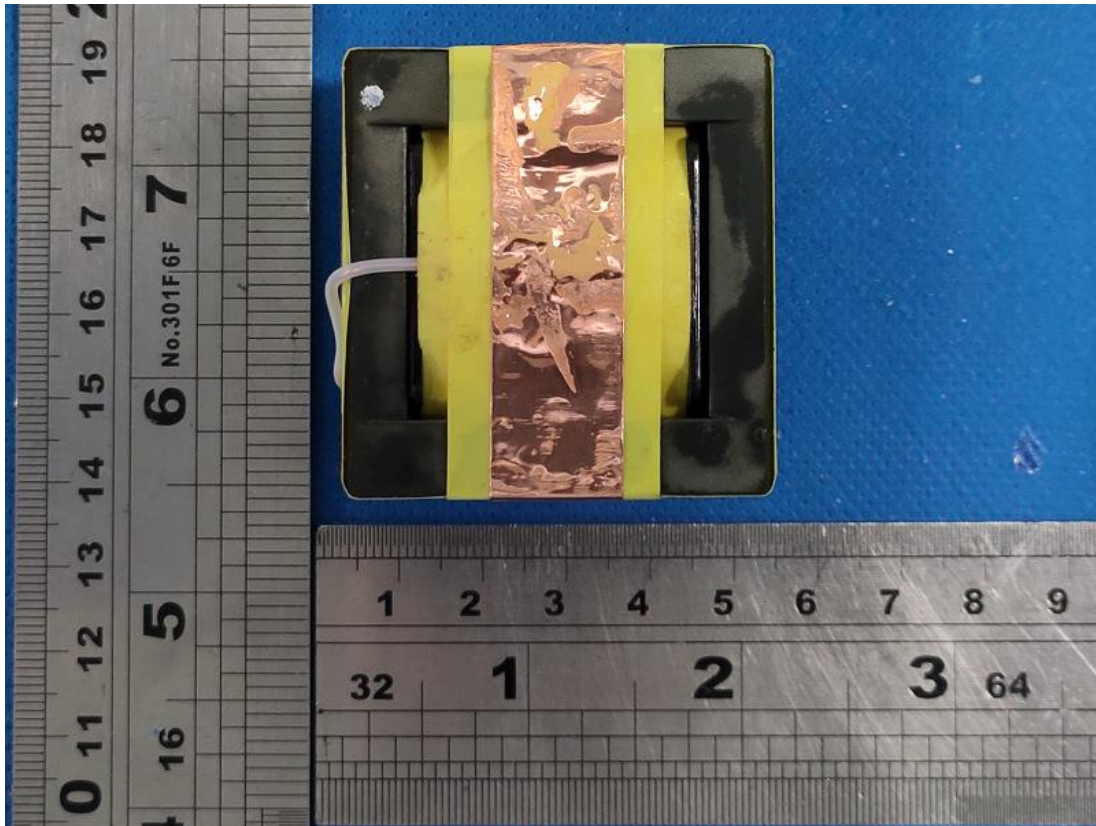
Picture 17.



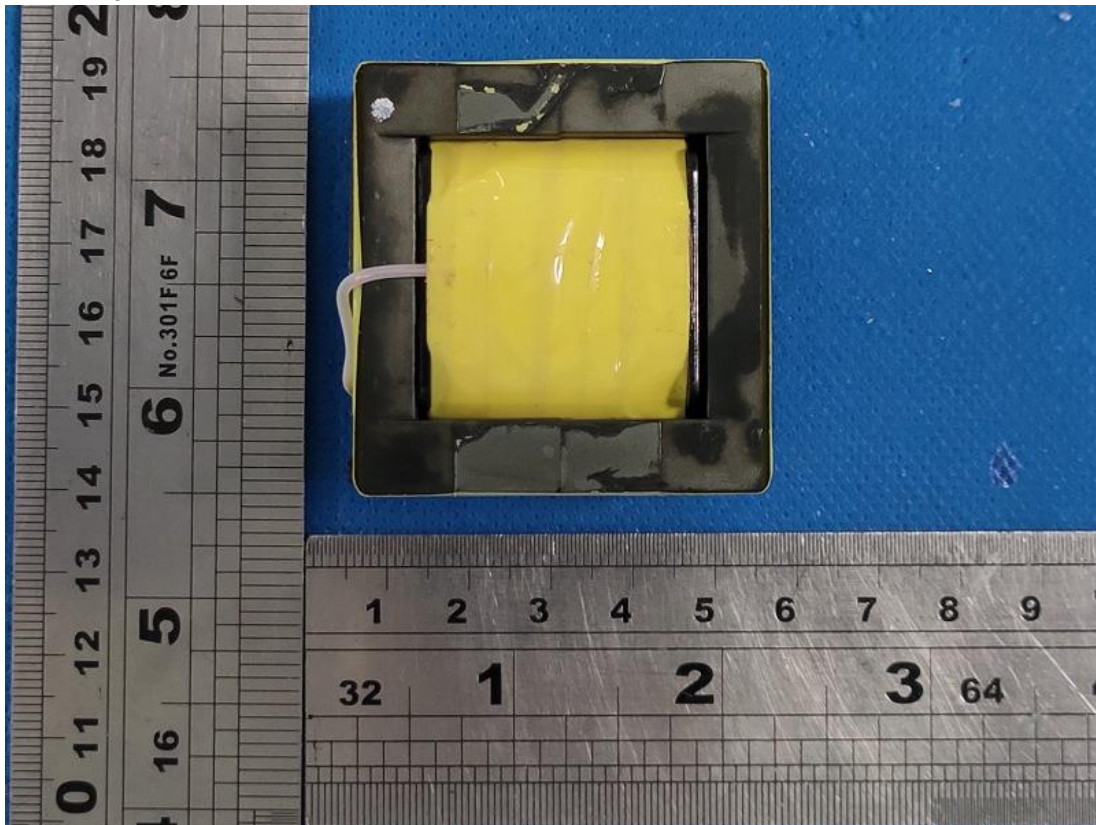
Picture 18.

Product: LINE ARRAY SPEAKER SYSTEMS

Type Designation: See test report



Picture 19.

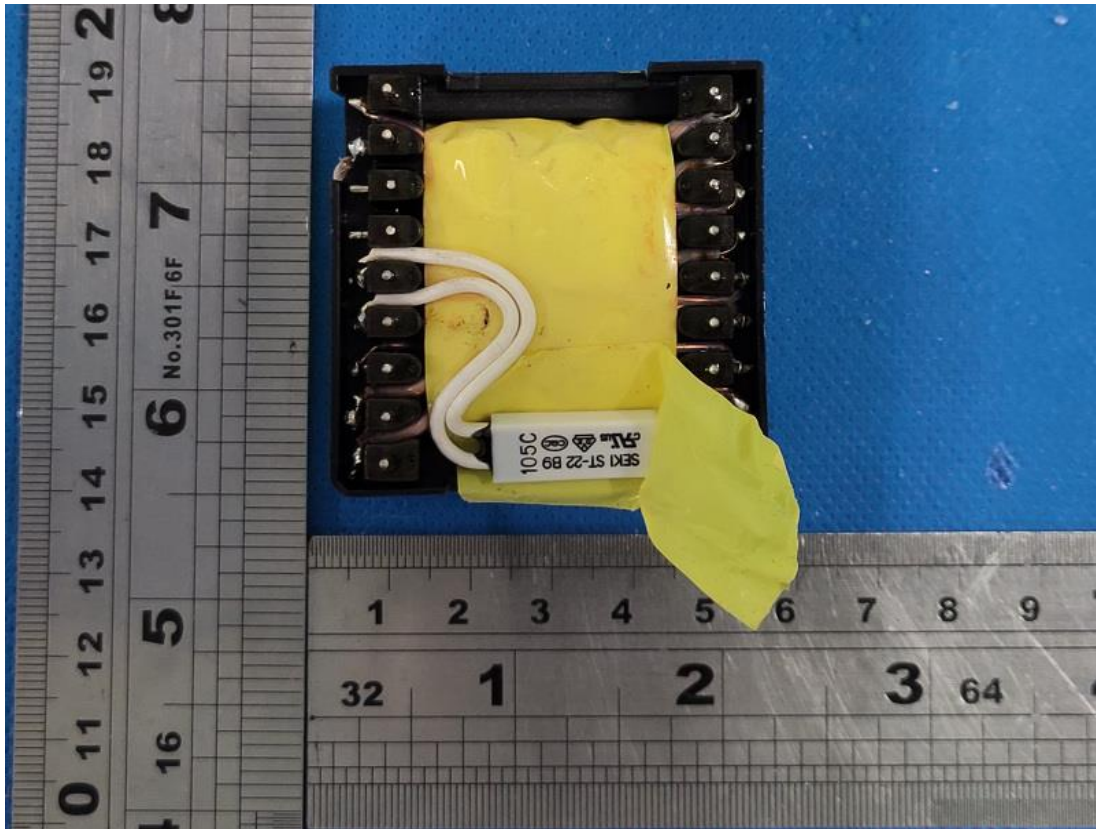


Picture 20.

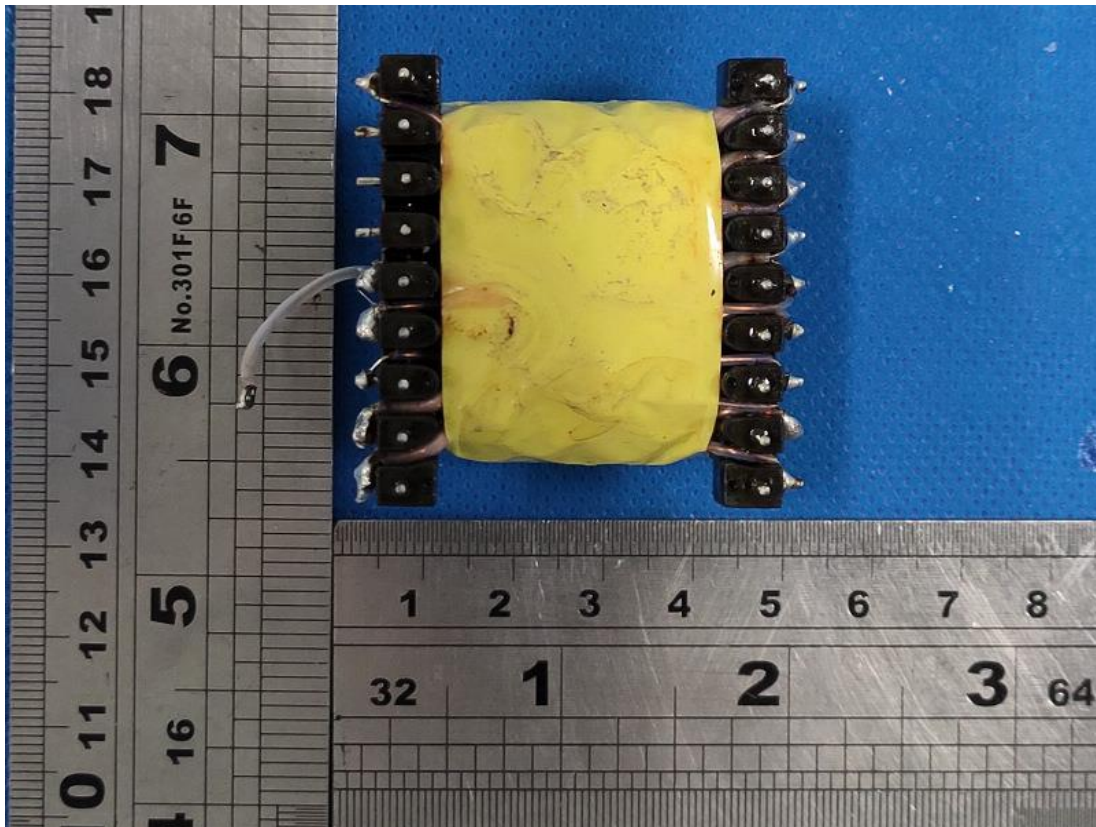


Product: LINE ARRAY SPEAKER SYSTEMS

Type Designation: See test report



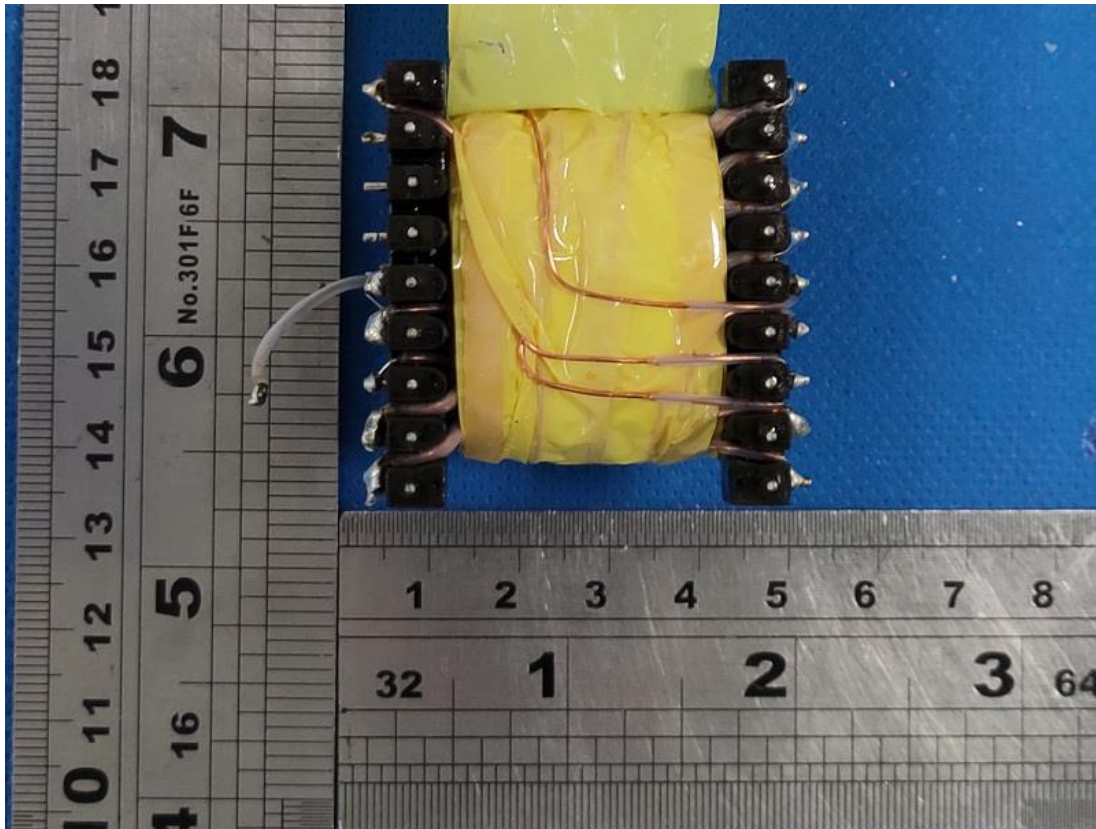
Picture 21.



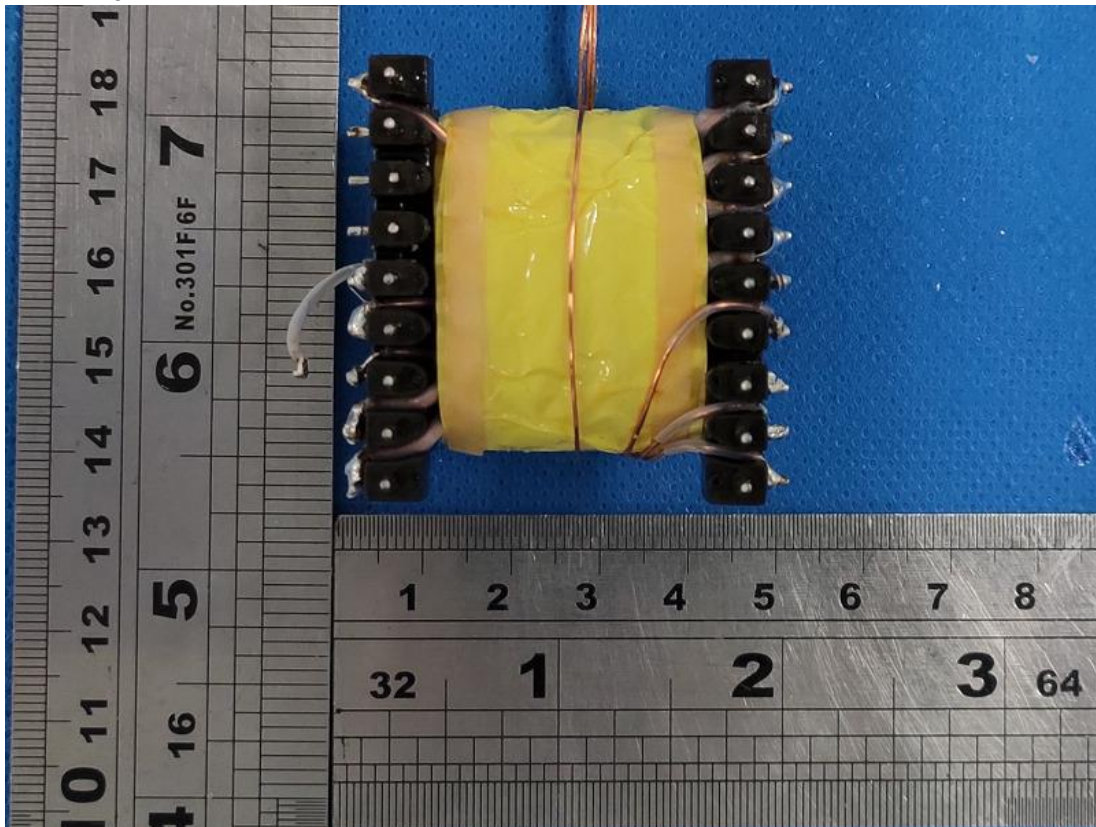
Picture 22.

Product: LINE ARRAY SPEAKER SYSTEMS

Type Designation: See test report



Picture 23.

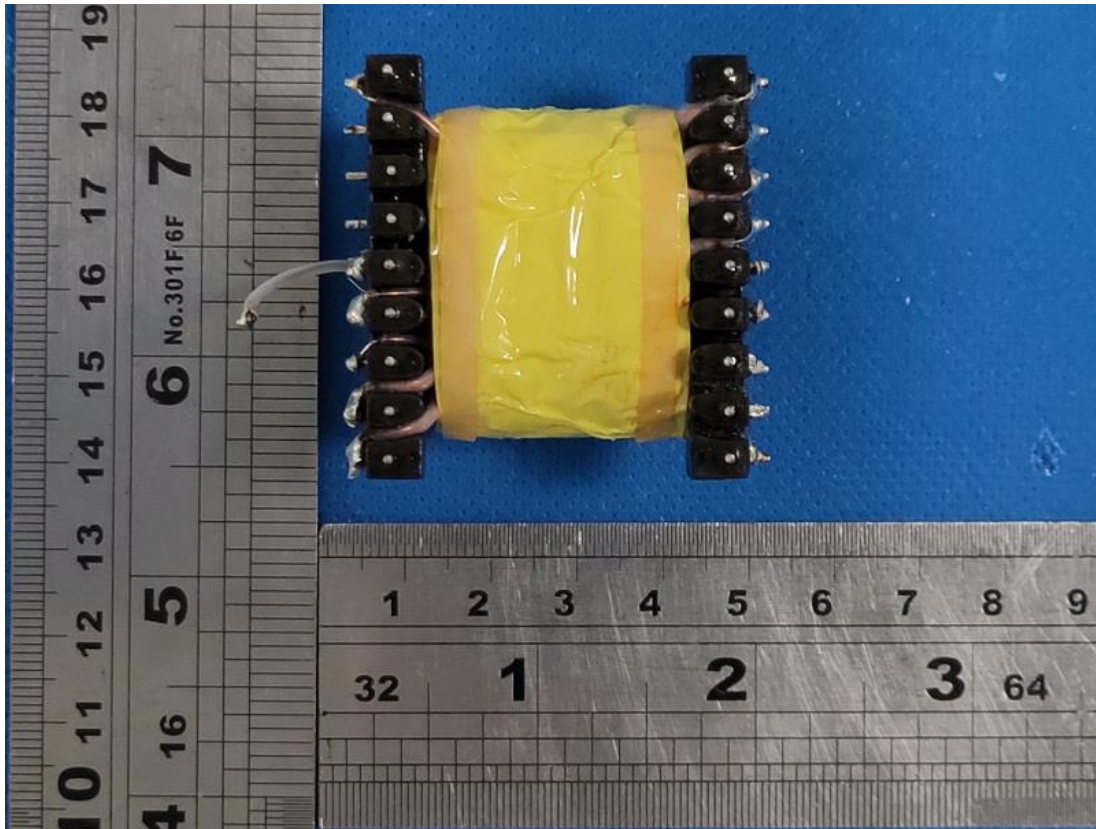


Picture 24.

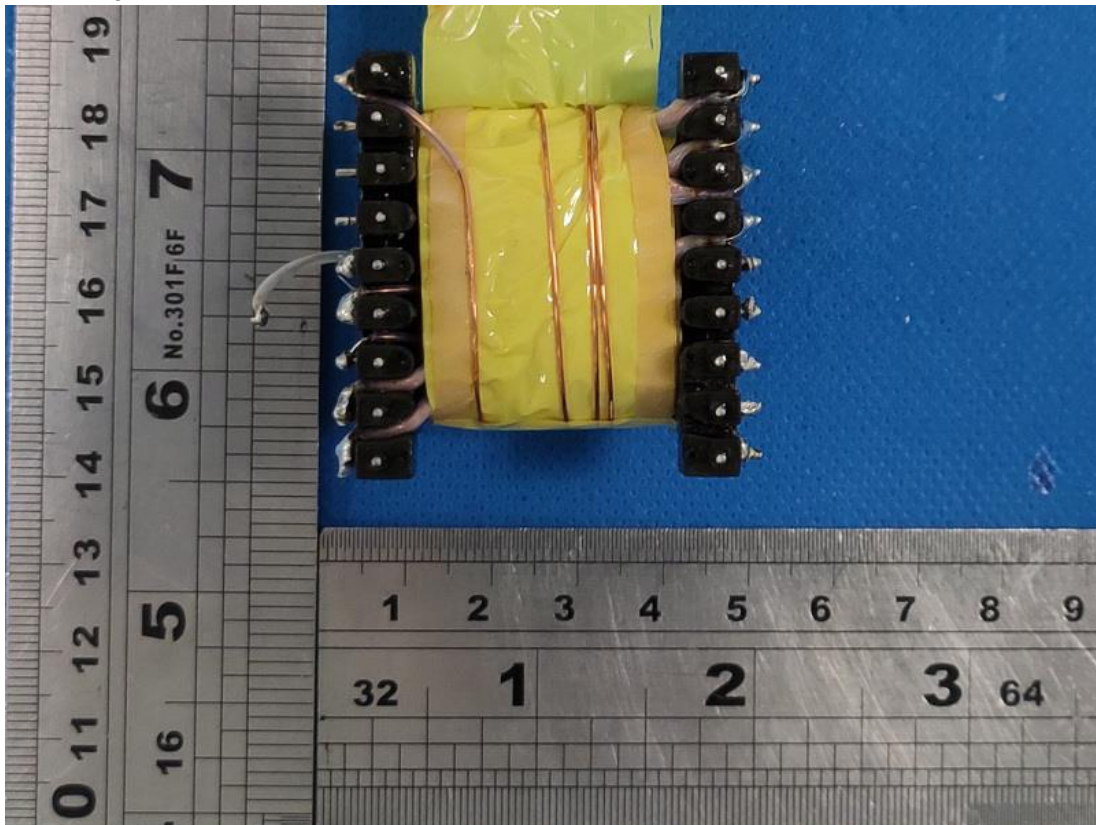


Product: LINE ARRAY SPEAKER SYSTEMS

Type Designation: See test report



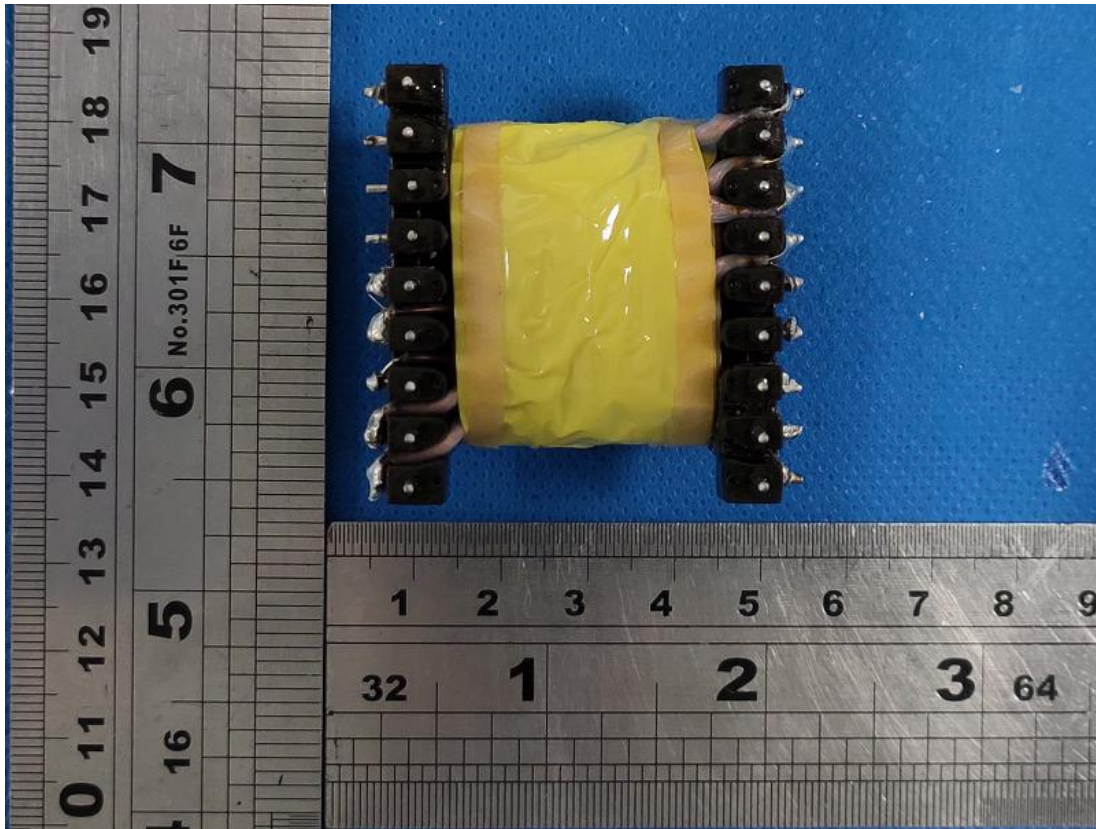
Picture 25.



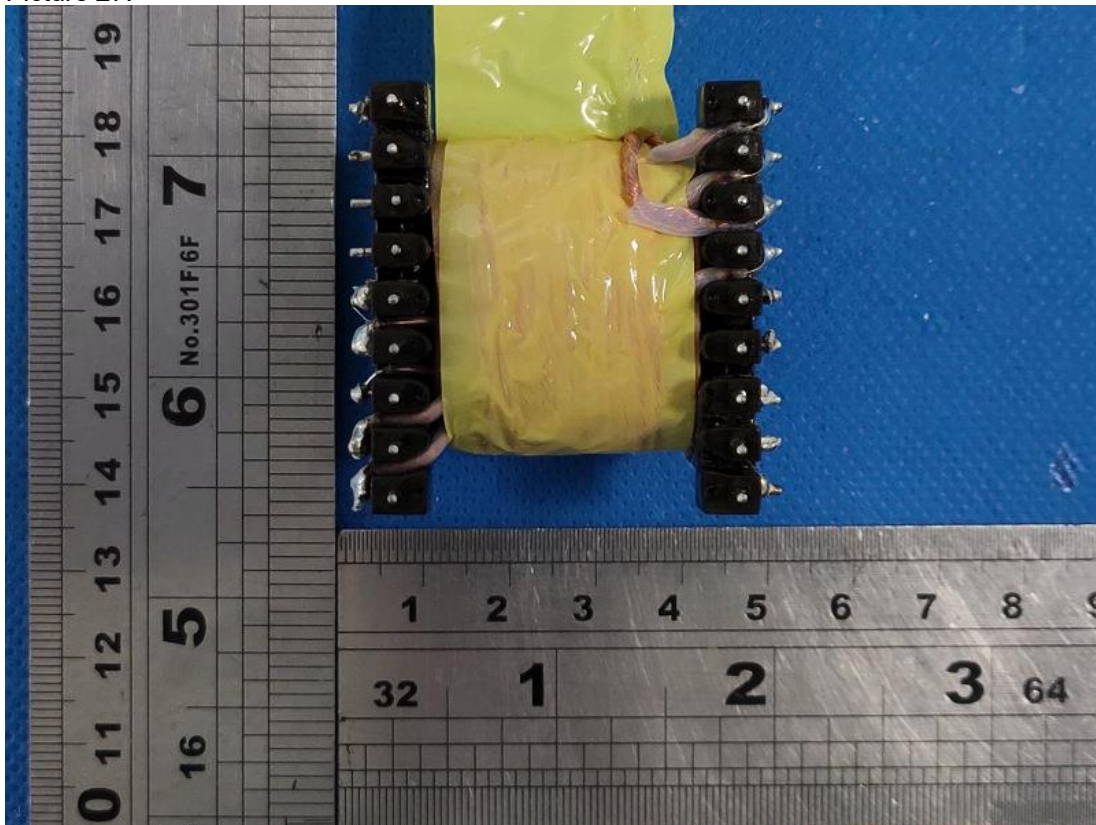
Picture 26.

Product: LINE ARRAY SPEAKER SYSTEMS

Type Designation: See test report



Picture 27.

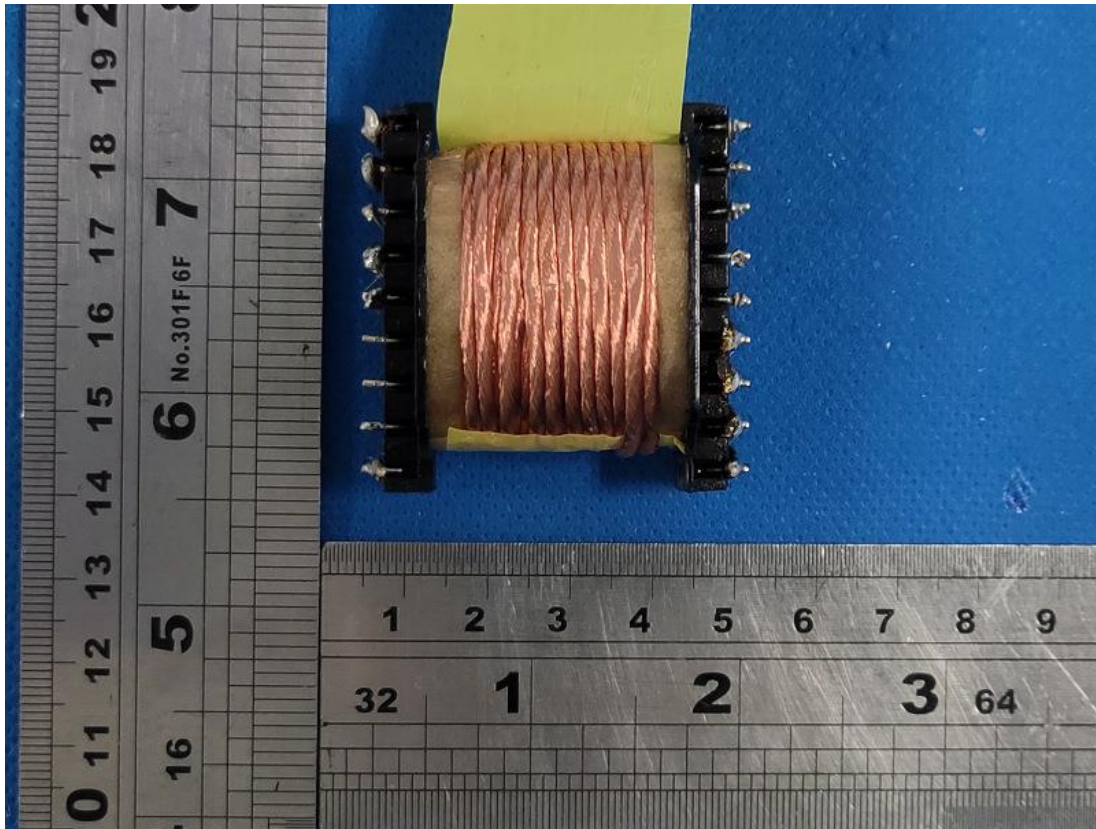


Picture 28.

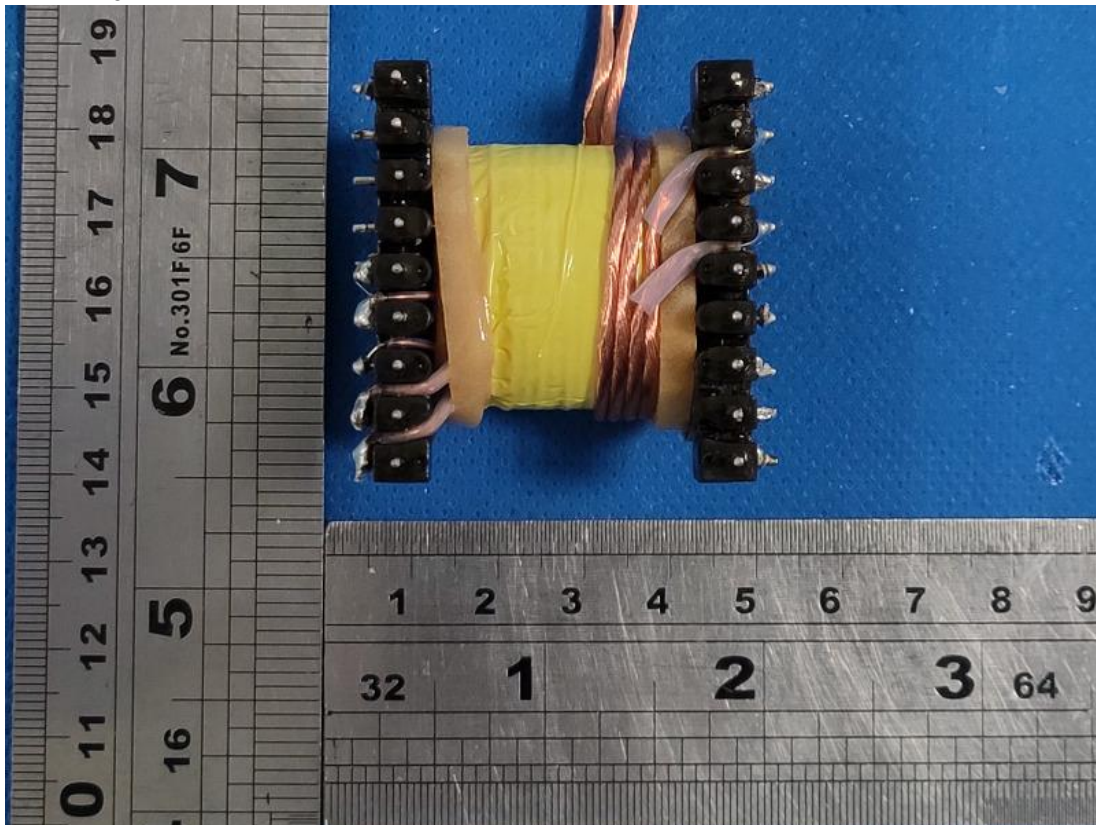


Product: LINE ARRAY SPEAKER SYSTEMS

Type Designation: See test report



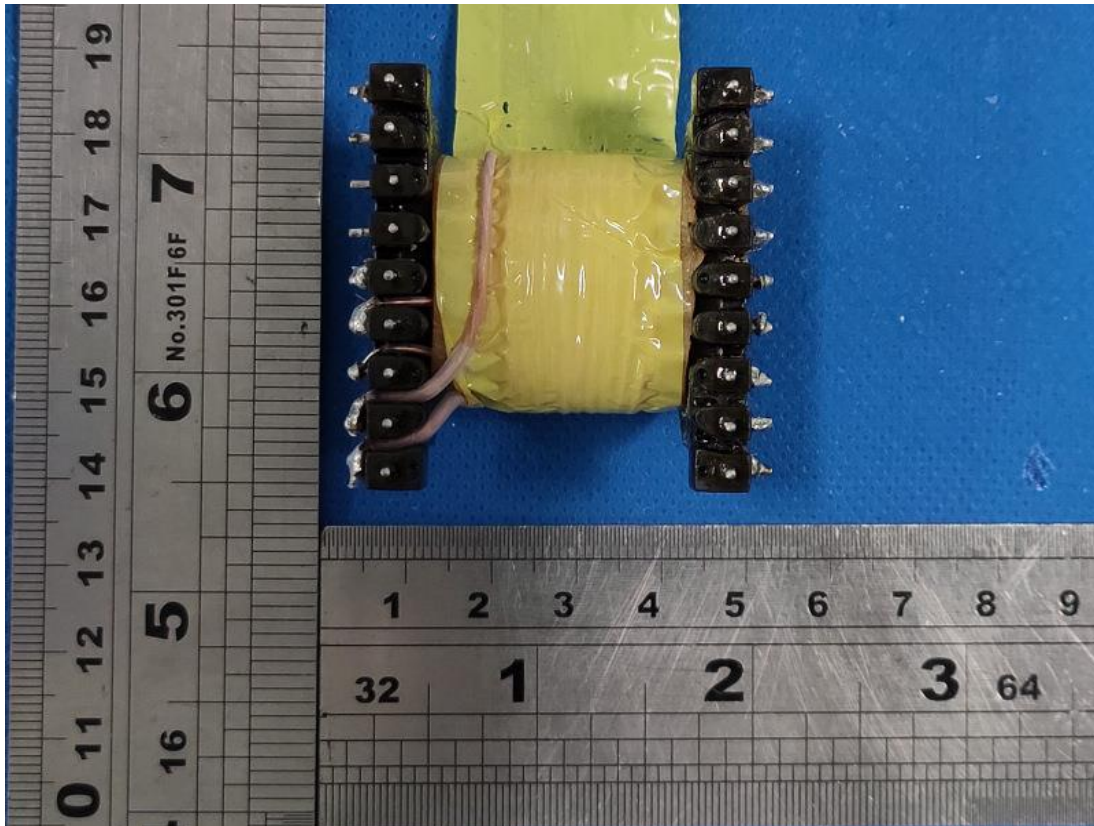
Picture 29.



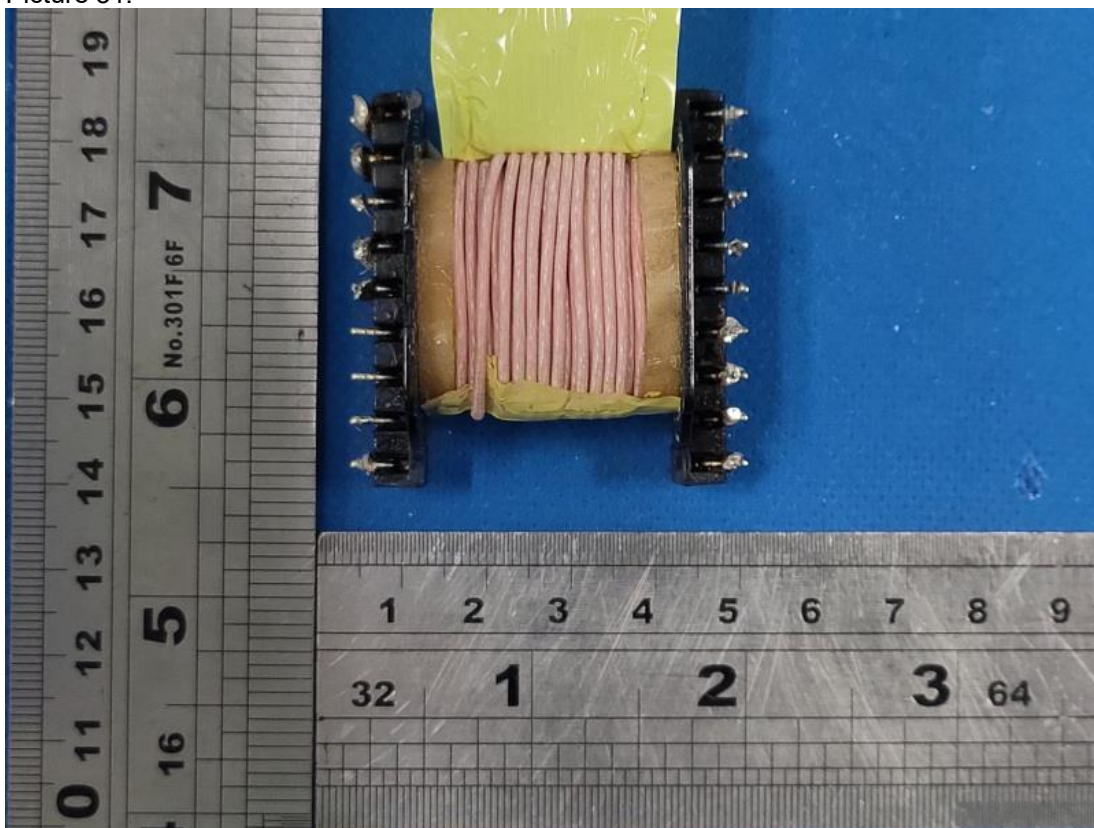
Picture 30.

Product: LINE ARRAY SPEAKER SYSTEMS

Type Designation: See test report



Picture 31.

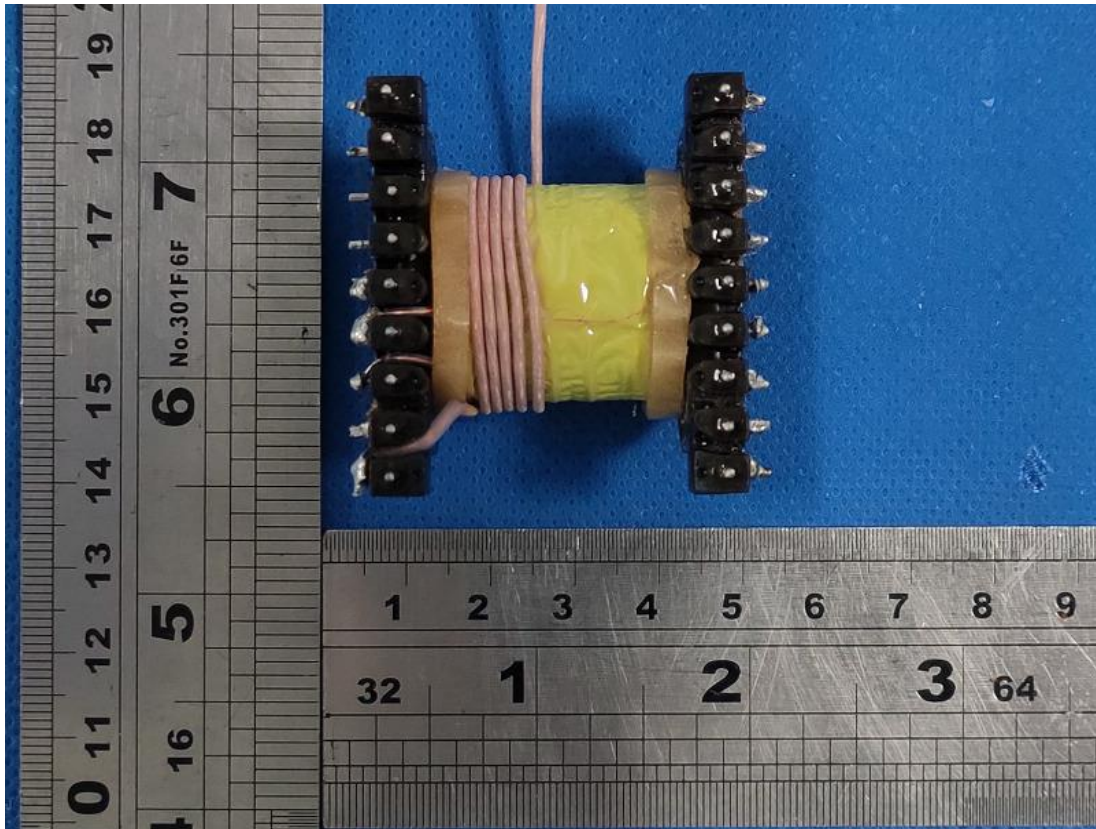


Picture 32.

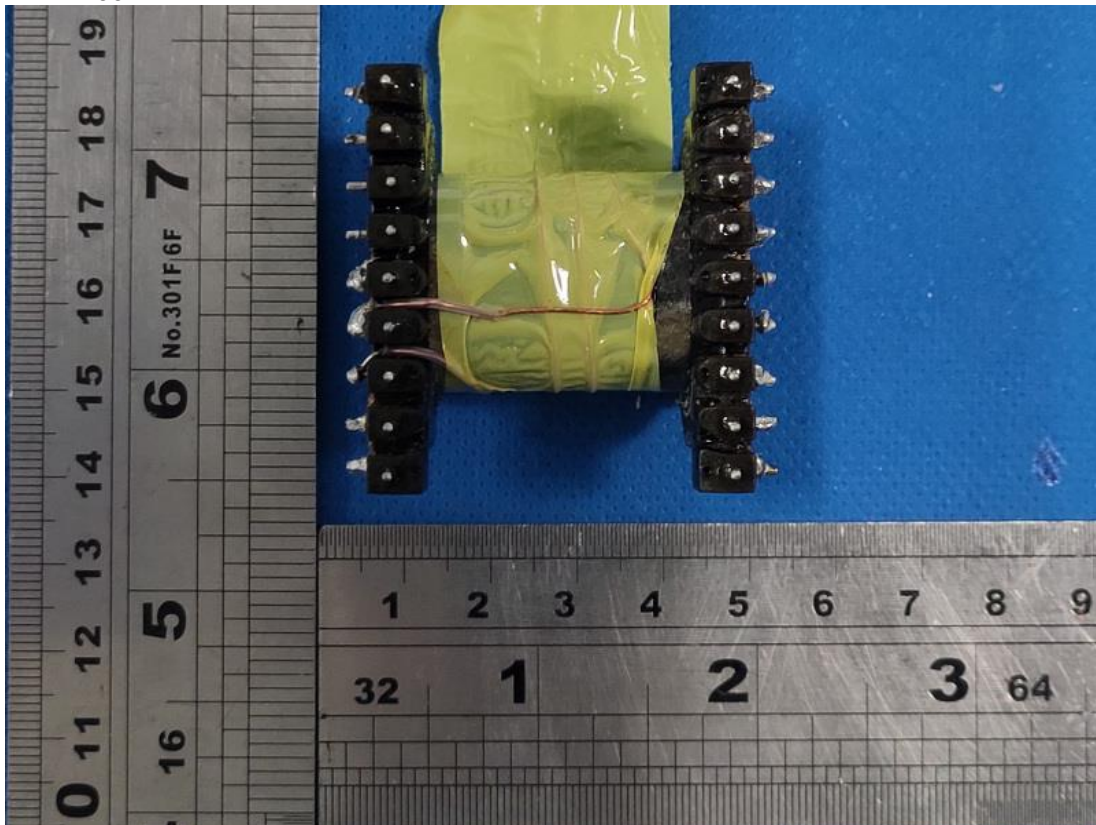


Product: LINE ARRAY SPEAKER SYSTEMS

Type Designation: See test report



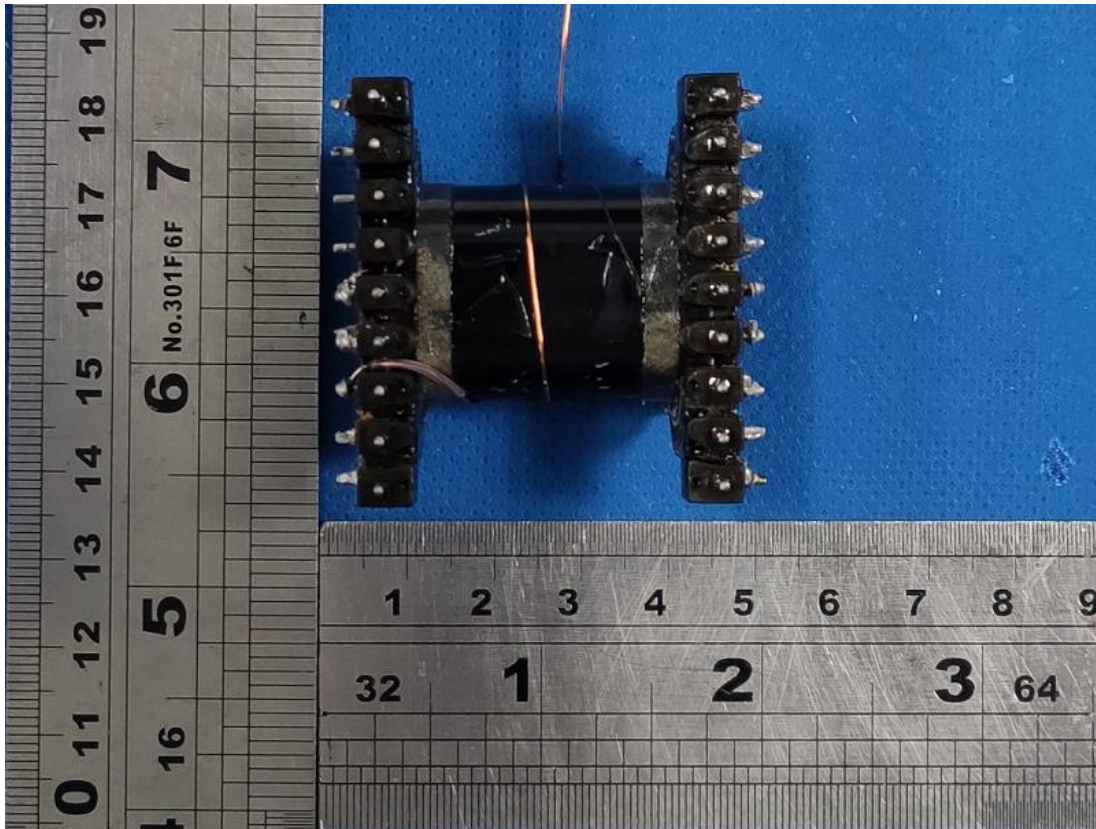
Picture 33.



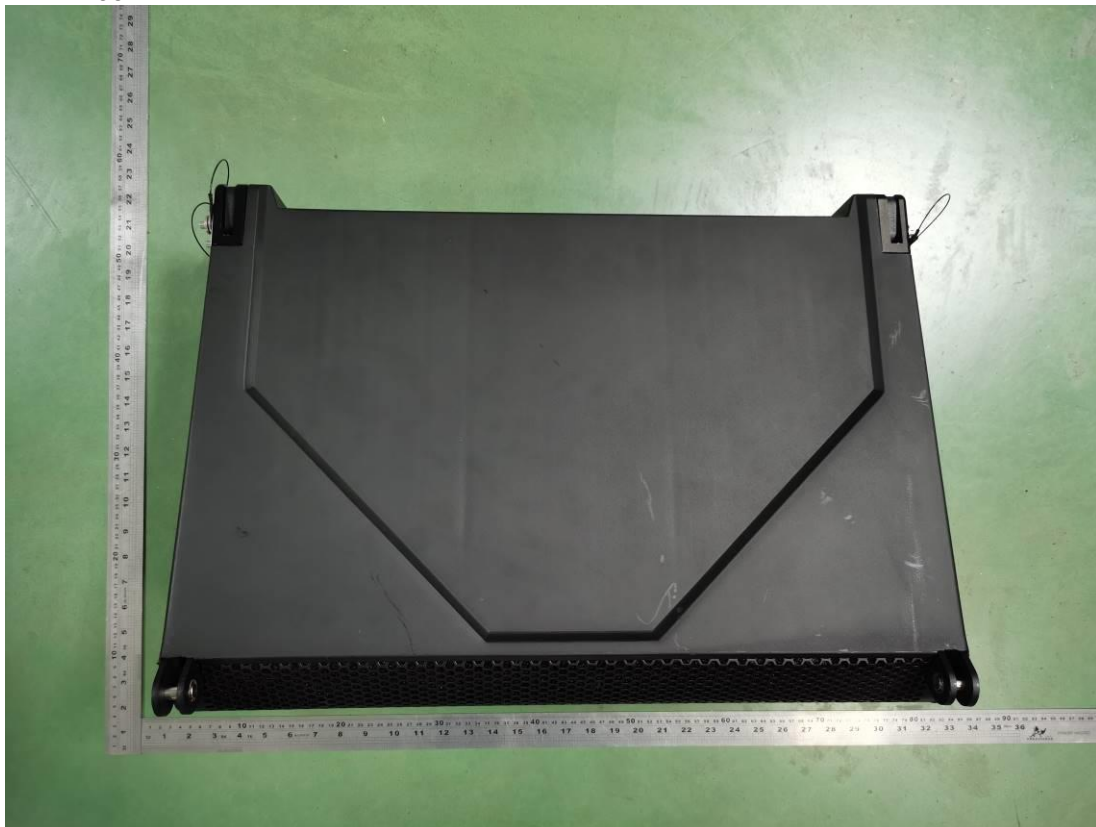
Picture 34.

Product: LINE ARRAY SPEAKER SYSTEMS

Type Designation: See test report



Picture 35.



Picture 36. L-ARRAY 28HA



Product: LINE ARRAY SPEAKER SYSTEMS

Type Designation: See test report



Picture 37.



Picture 38.

Product: LINE ARRAY SPEAKER SYSTEMS

Type Designation: See test report



Picture 39.

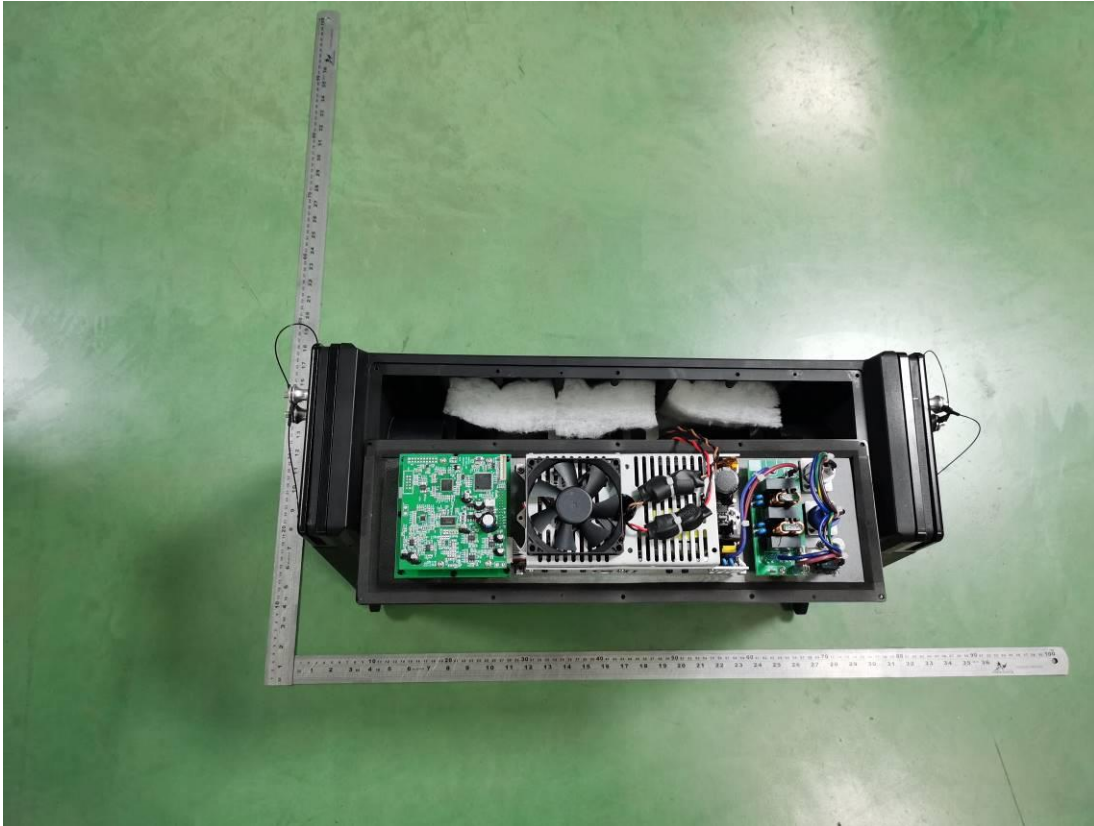


Picture 40.



Product: LINE ARRAY SPEAKER SYSTEMS

Type Designation: See test report



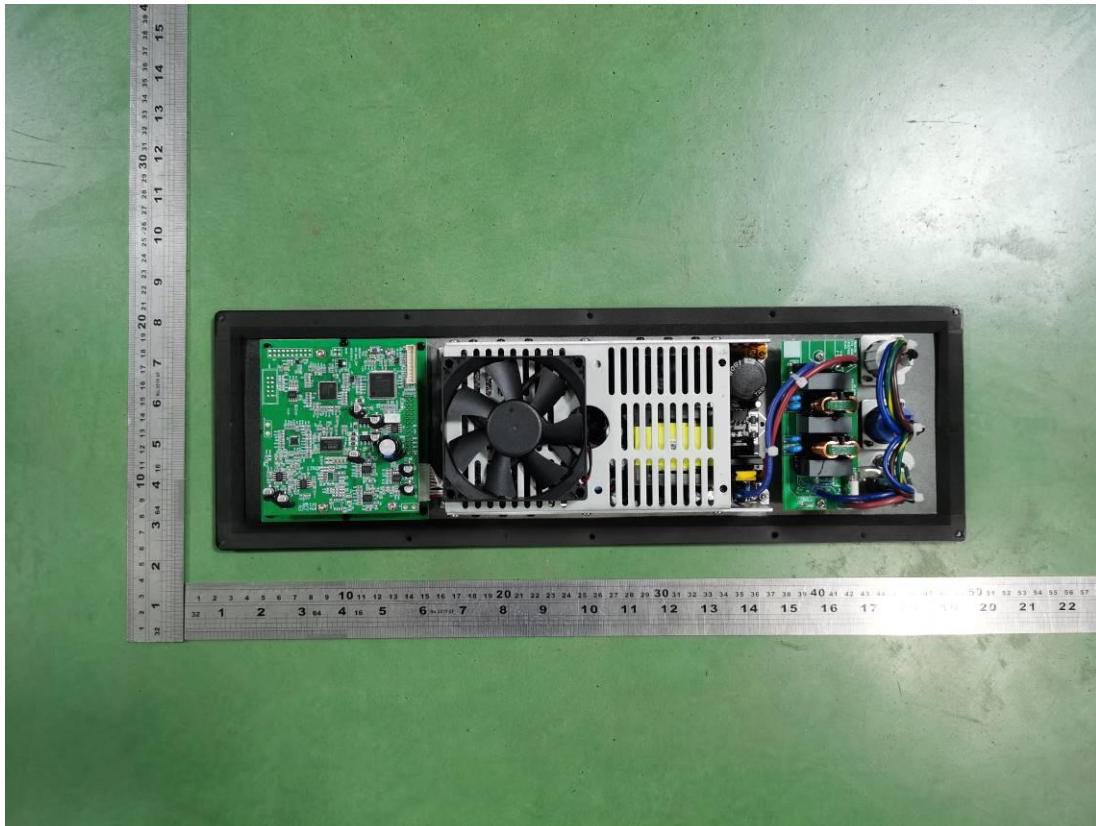
Picture 41.



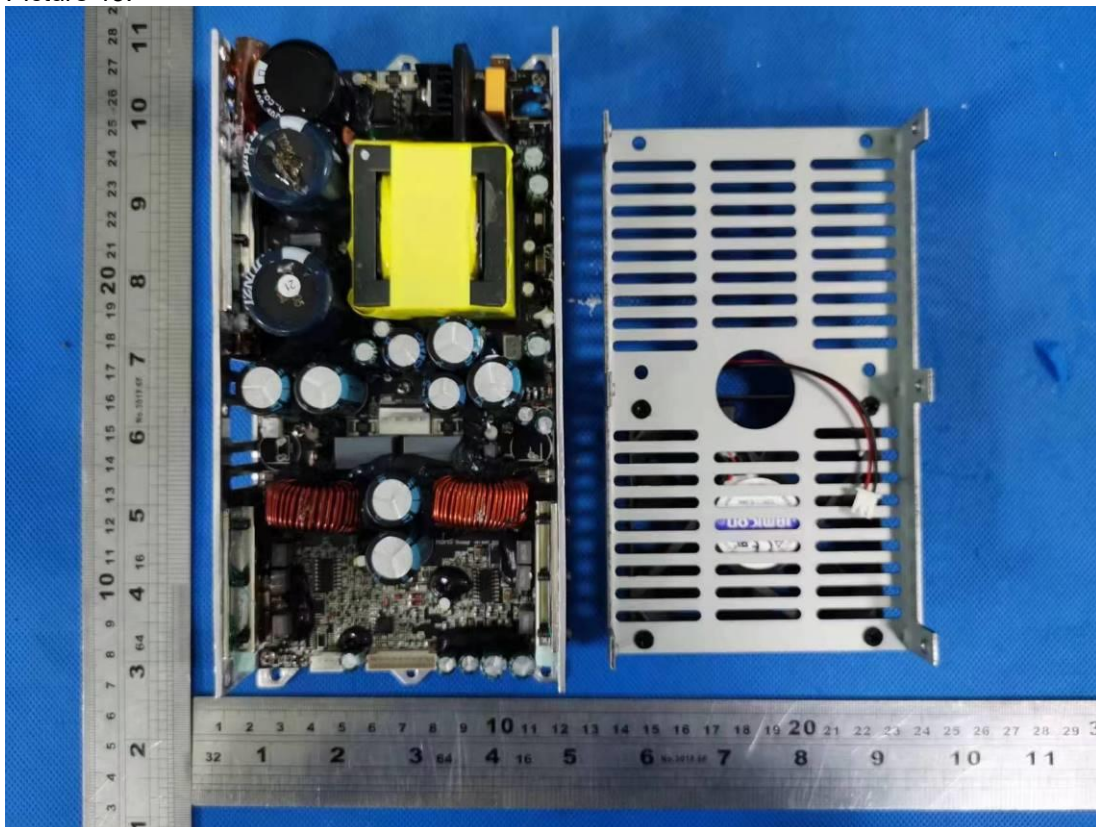
Picture 42.

Product: LINE ARRAY SPEAKER SYSTEMS

Type Designation: See test report



Picture 43.

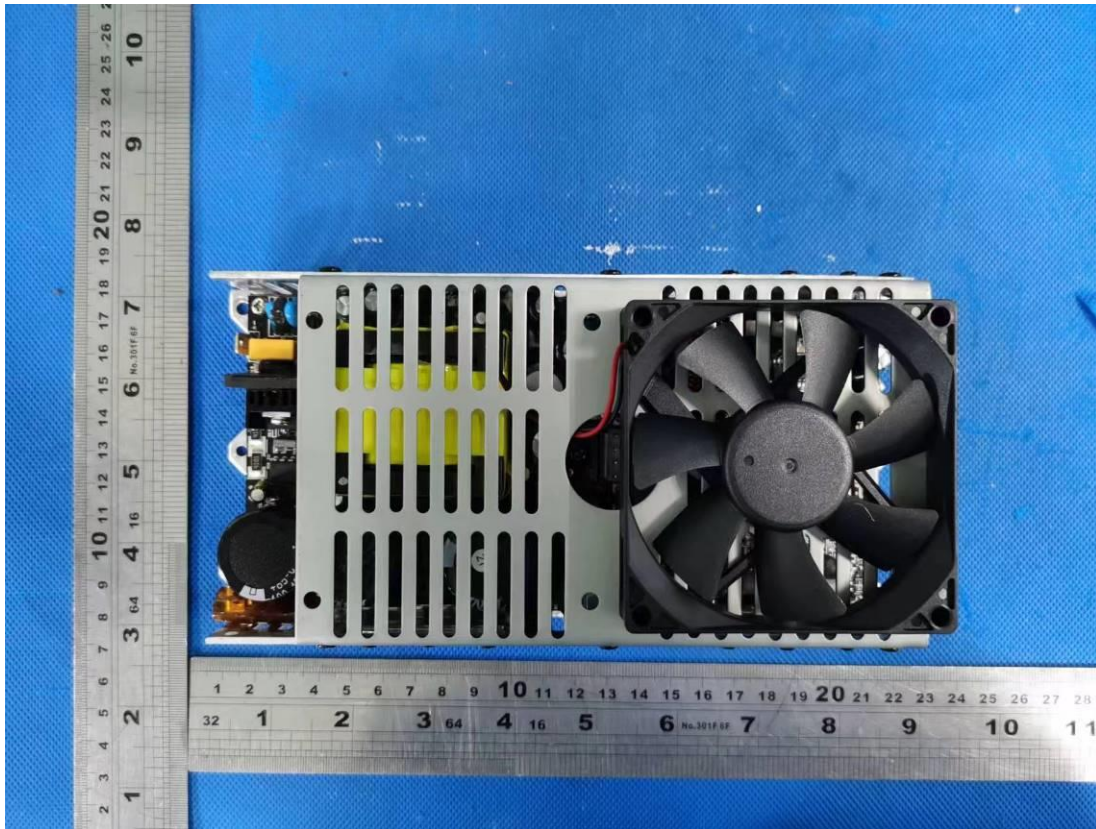


Picture 44.

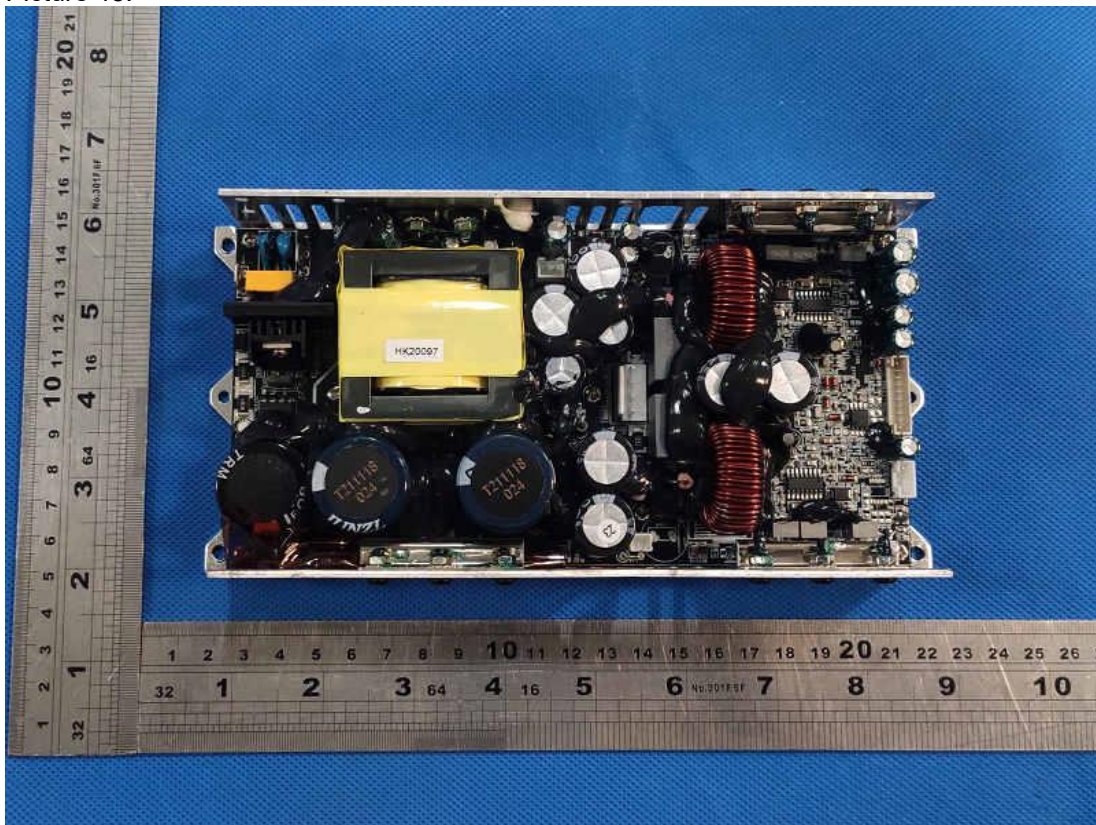


Product: LINE ARRAY SPEAKER SYSTEMS

Type Designation: See test report



Picture 45.

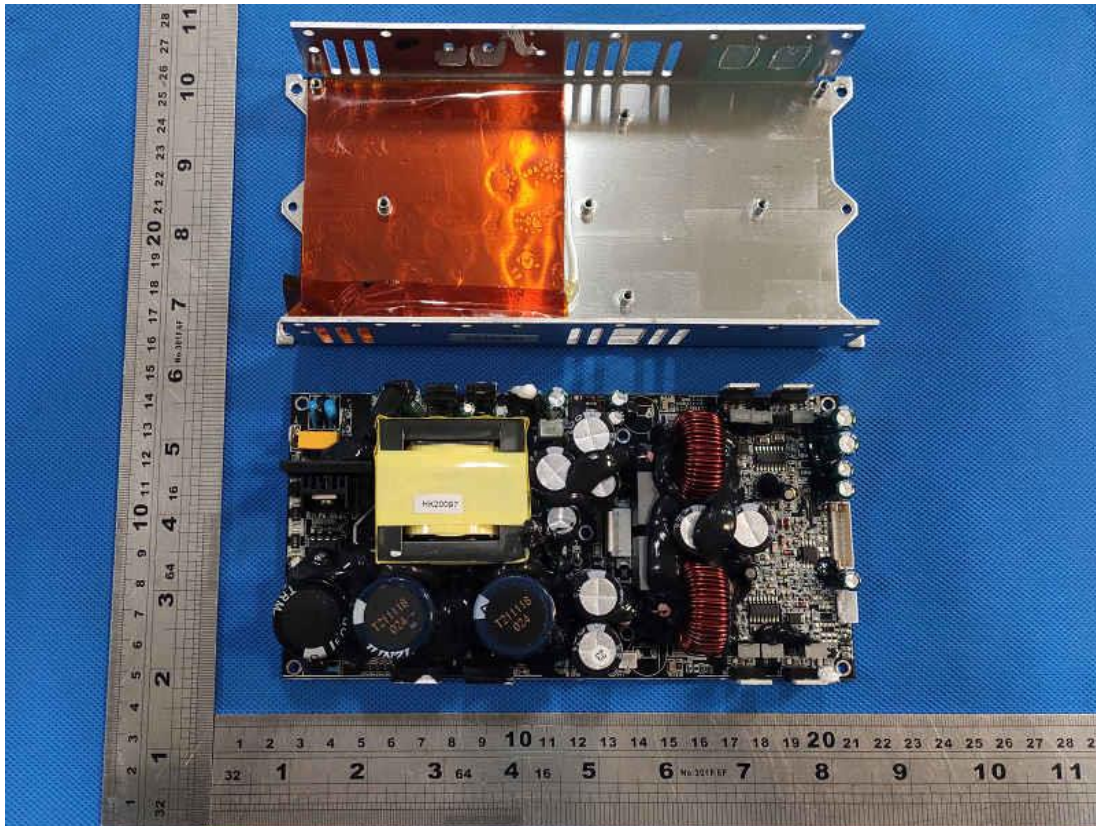


Picture 46.

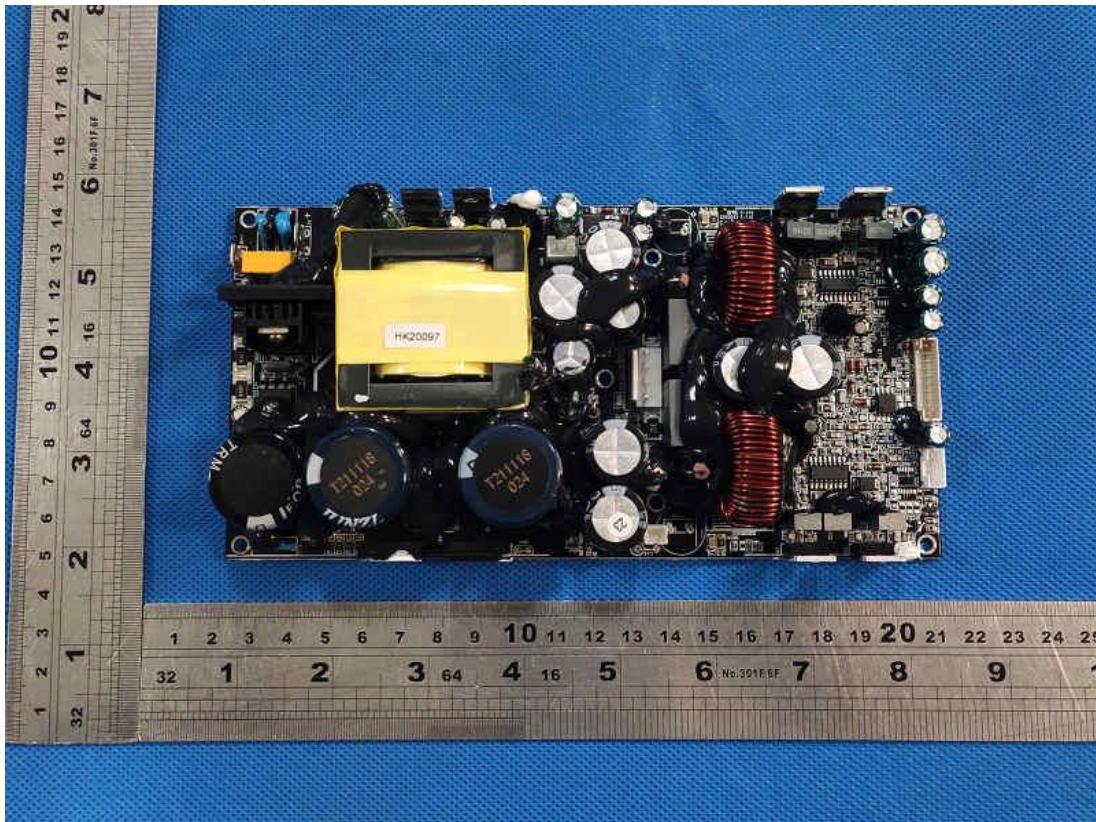


Product: LINE ARRAY SPEAKER SYSTEMS

Type Designation: See test report



Picture 47.

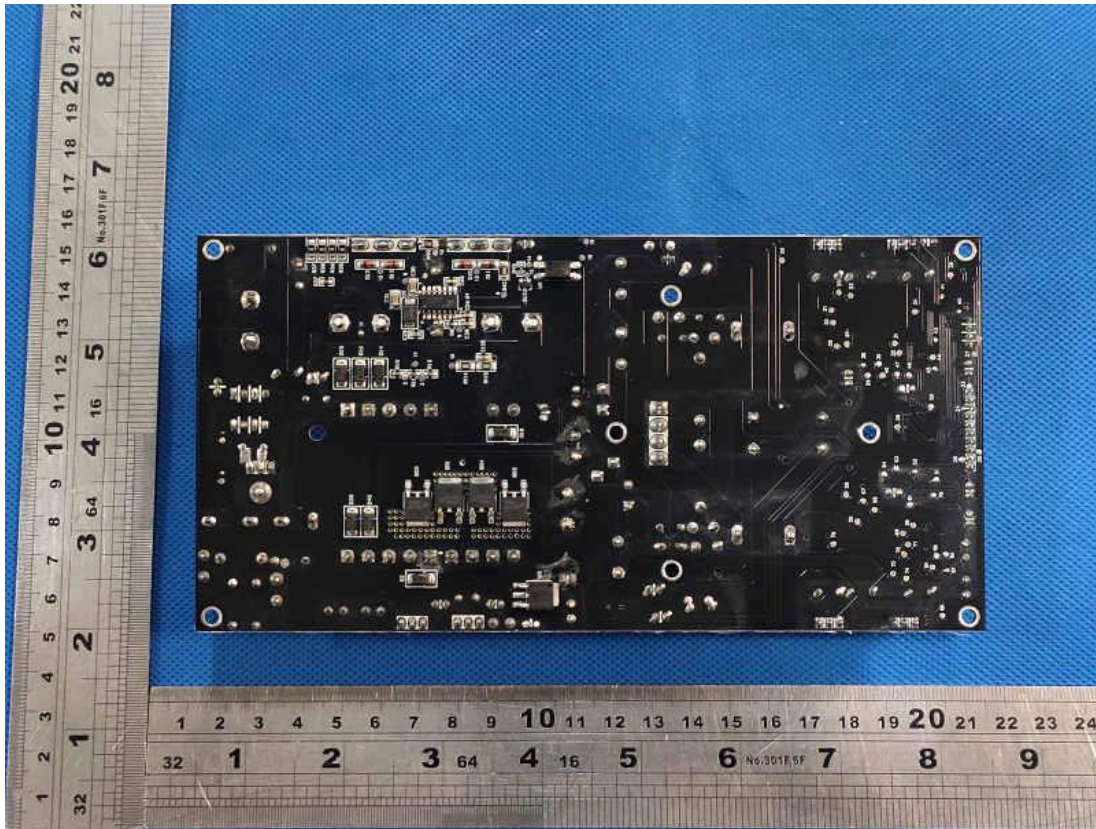


Picture 48.

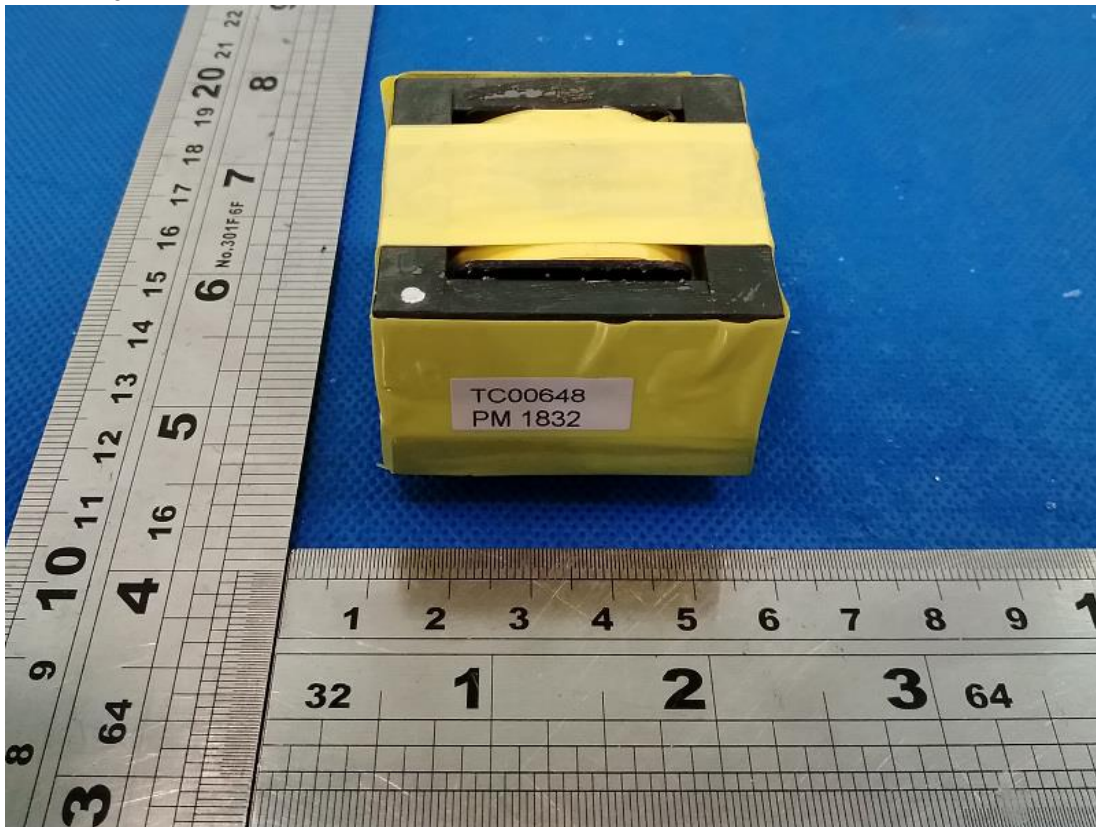


Product: LINE ARRAY SPEAKER SYSTEMS

Type Designation: See test report



Picture 49.

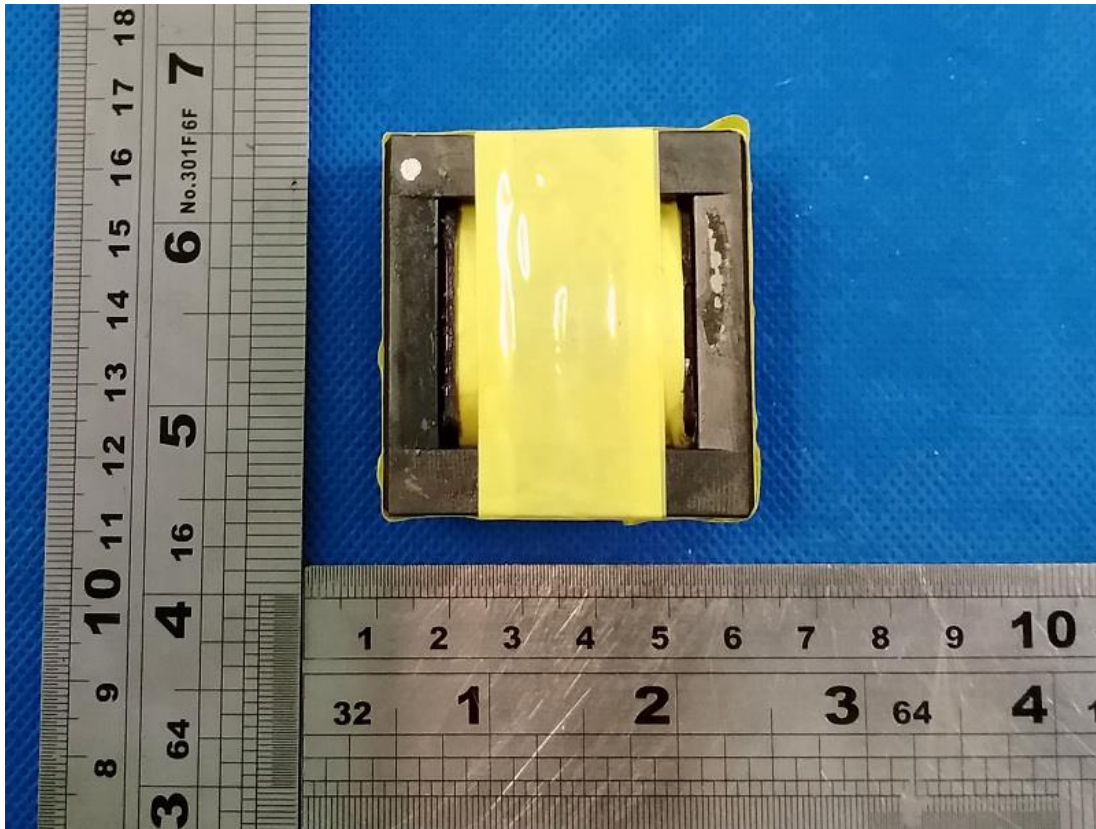


Picture 50.



Product: LINE ARRAY SPEAKER SYSTEMS

Type Designation: See test report



Picture 51.

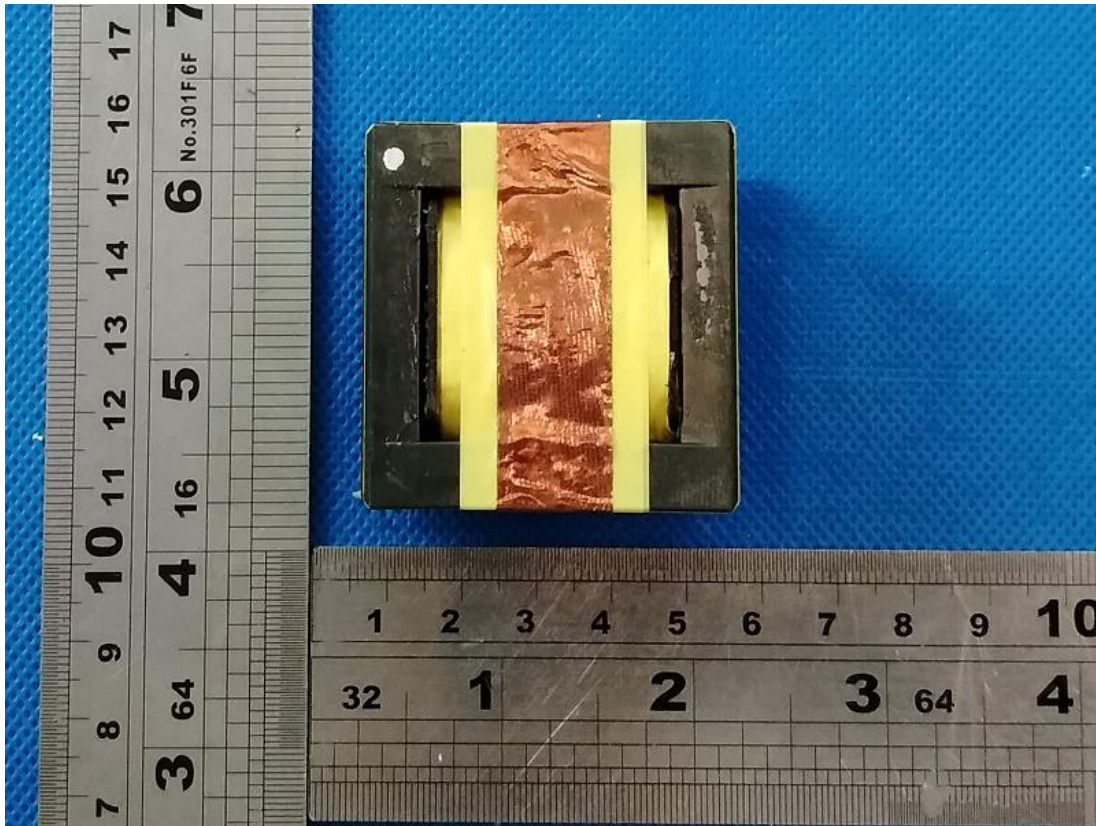


Picture 52.

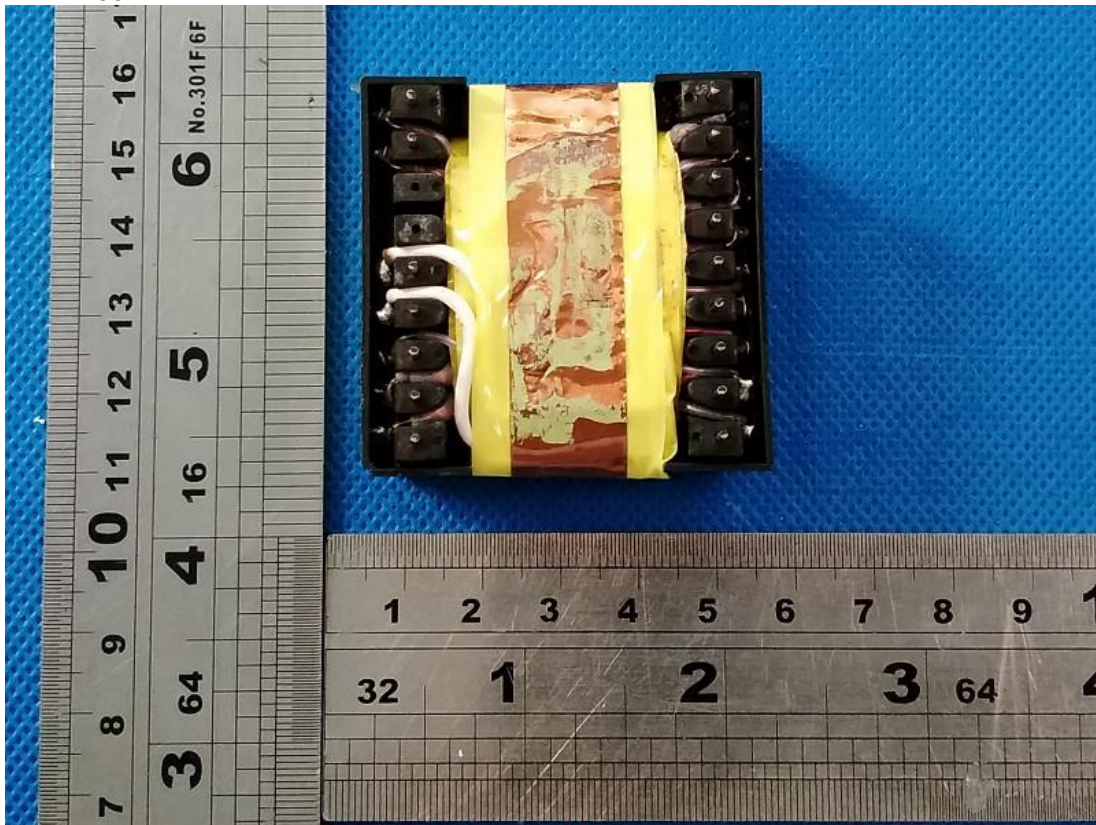


Product: LINE ARRAY SPEAKER SYSTEMS

Type Designation: See test report



Picture 53.

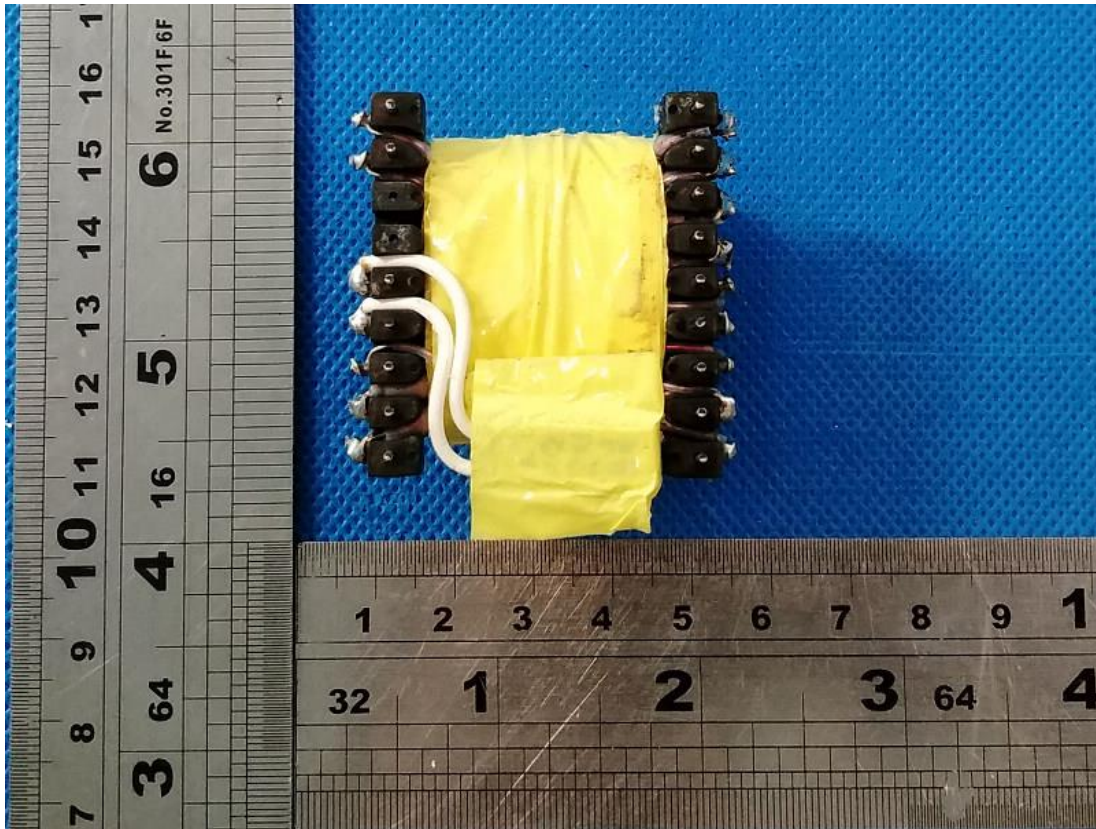


Picture 54.



Product: LINE ARRAY SPEAKER SYSTEMS

Type Designation: See test report



Picture 55.

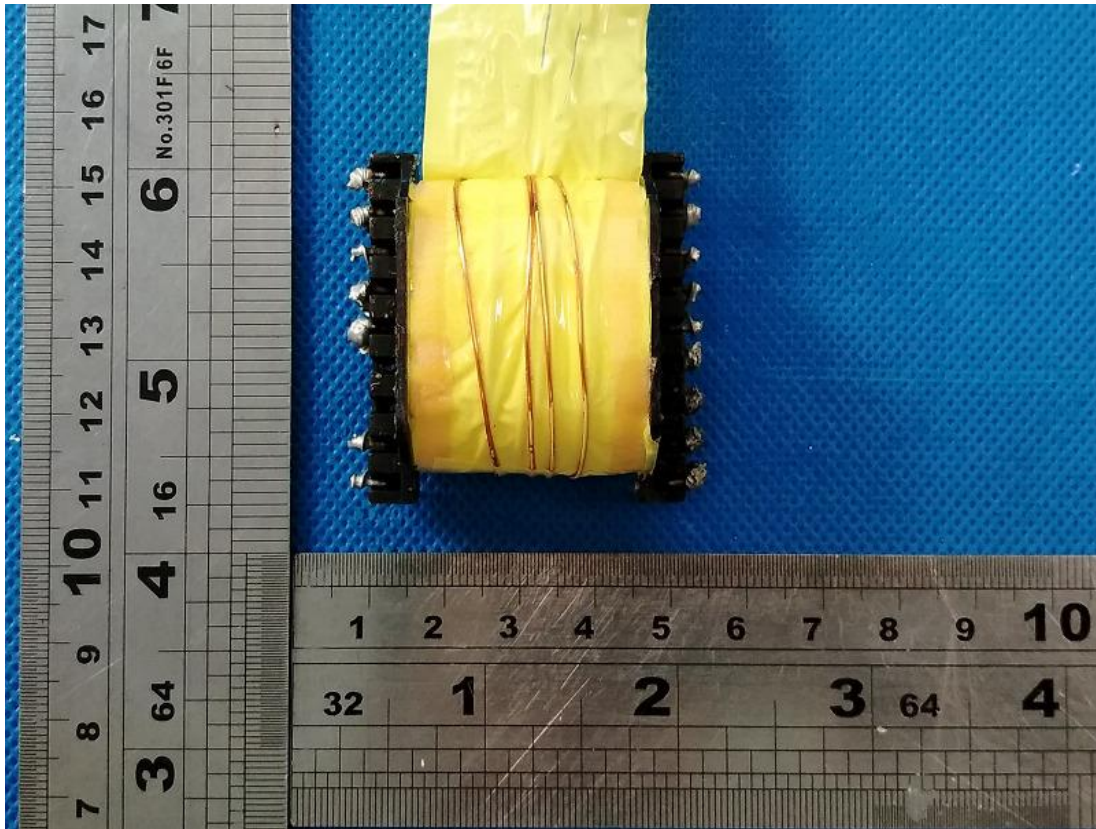


Picture 56.



Product: LINE ARRAY SPEAKER SYSTEMS

Type Designation: See test report



Picture 57.

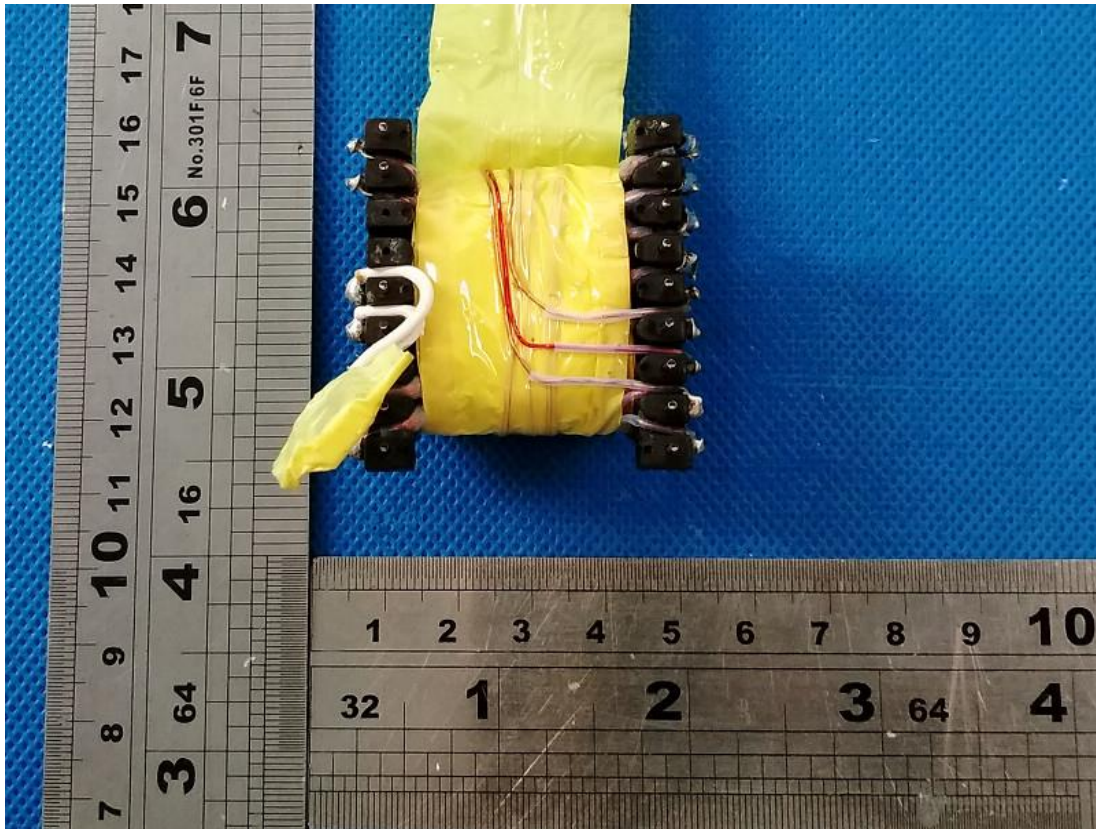


Picture 58.

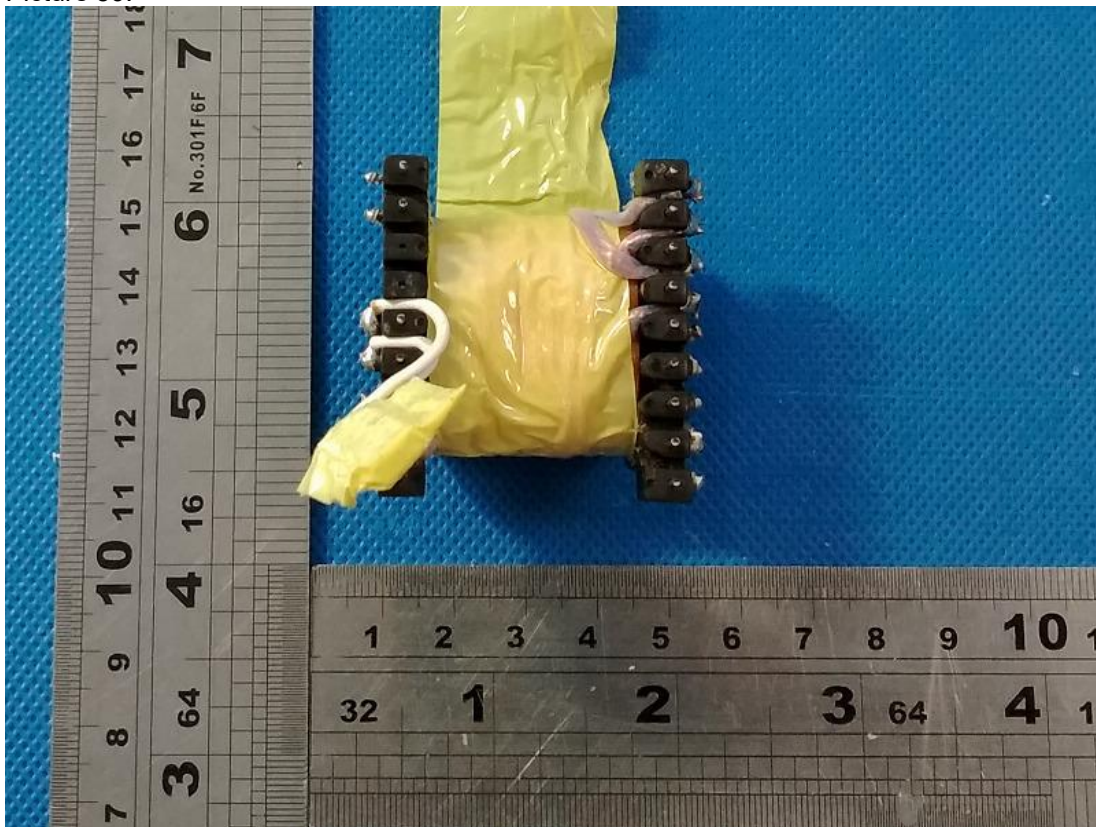


Product: LINE ARRAY SPEAKER SYSTEMS

Type Designation: See test report



Picture 59.

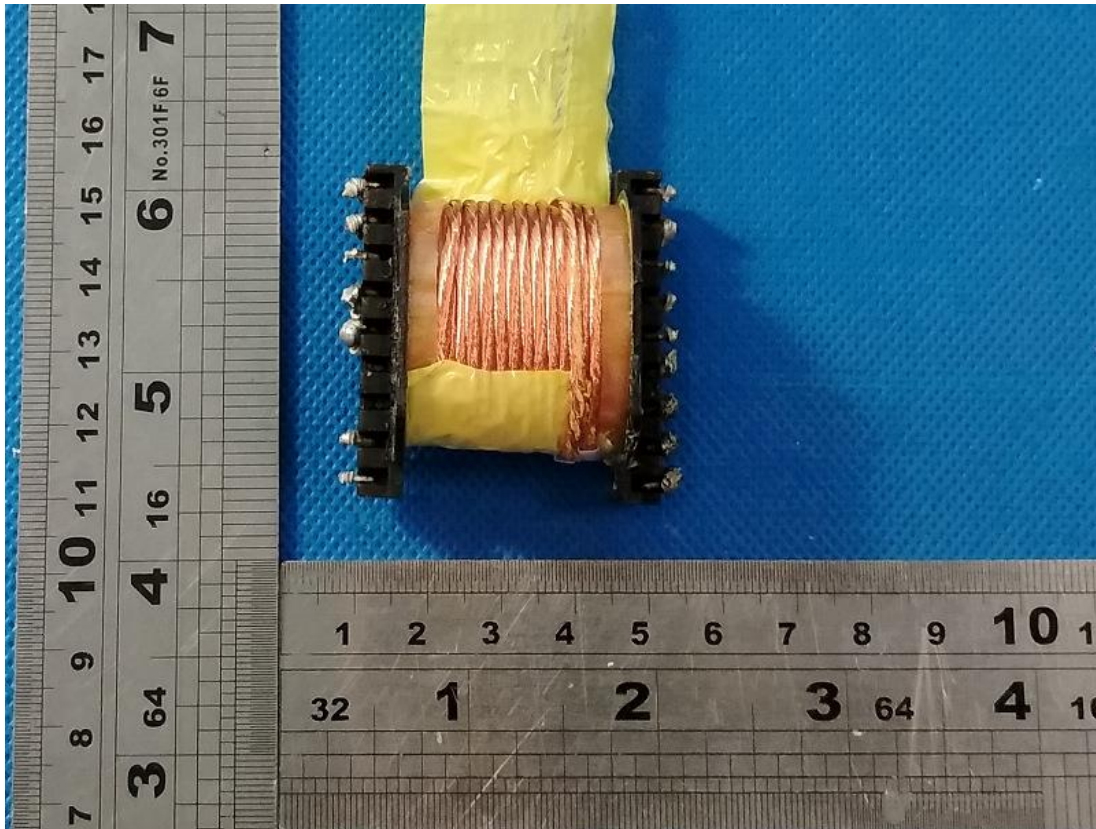


Picture 60.

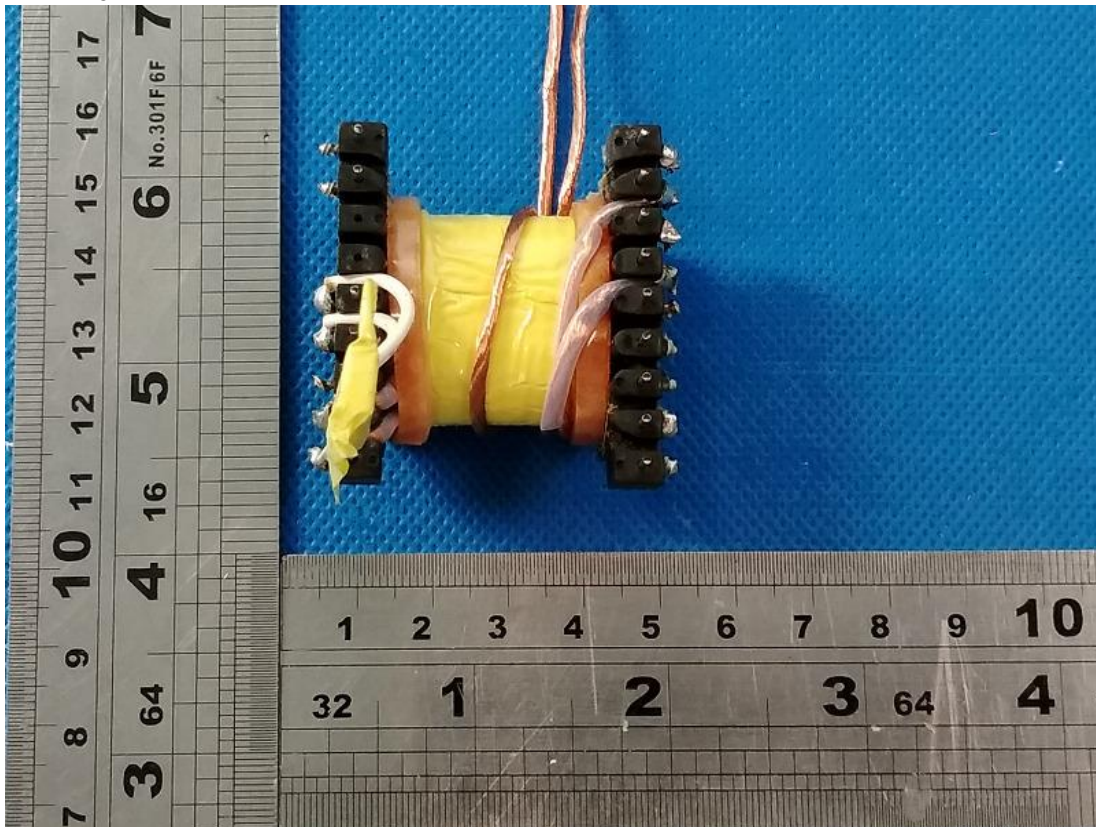


Product: LINE ARRAY SPEAKER SYSTEMS

Type Designation: See test report



Picture 61.

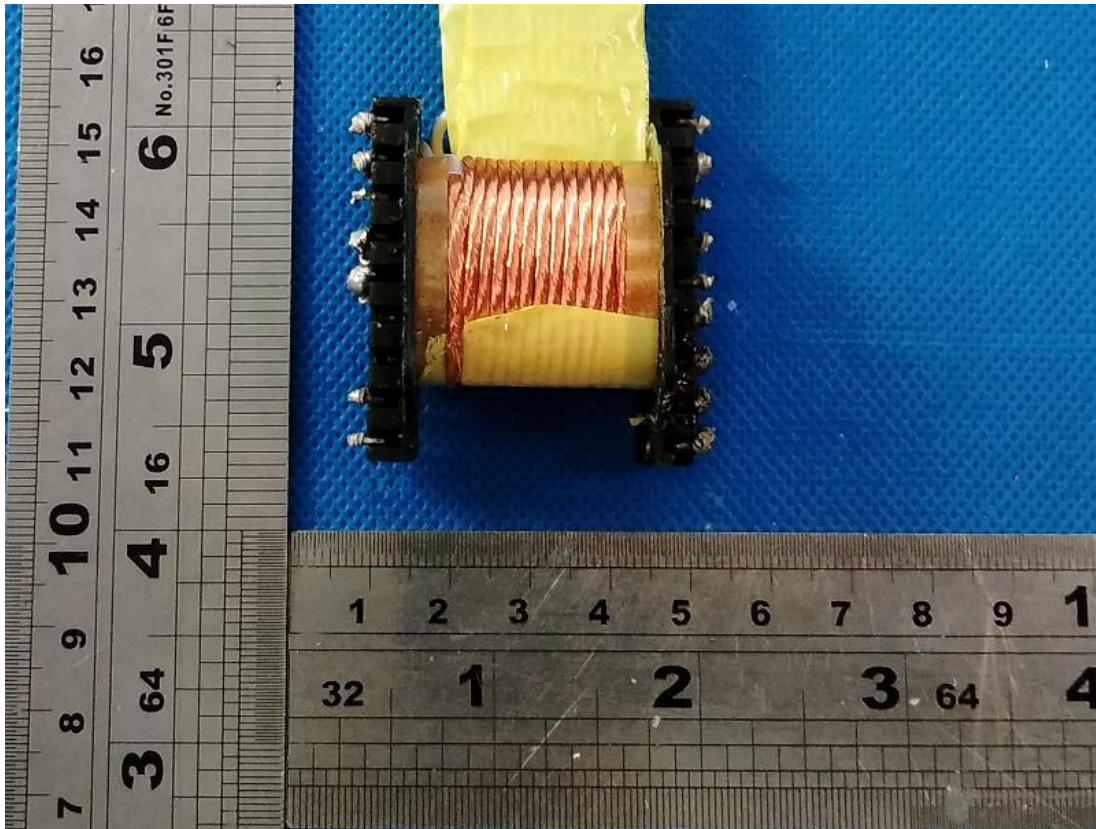


Picture 62.

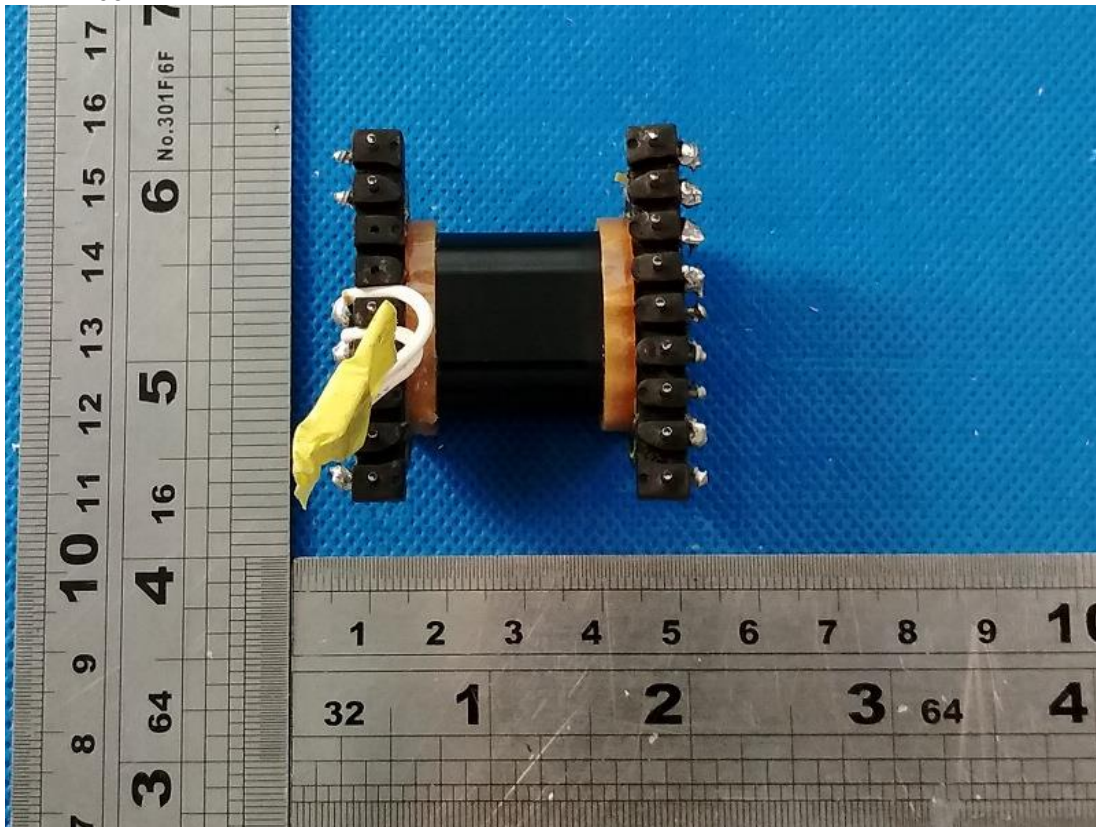


Product: LINE ARRAY SPEAKER SYSTEMS

Type Designation: See test report



Picture 63.

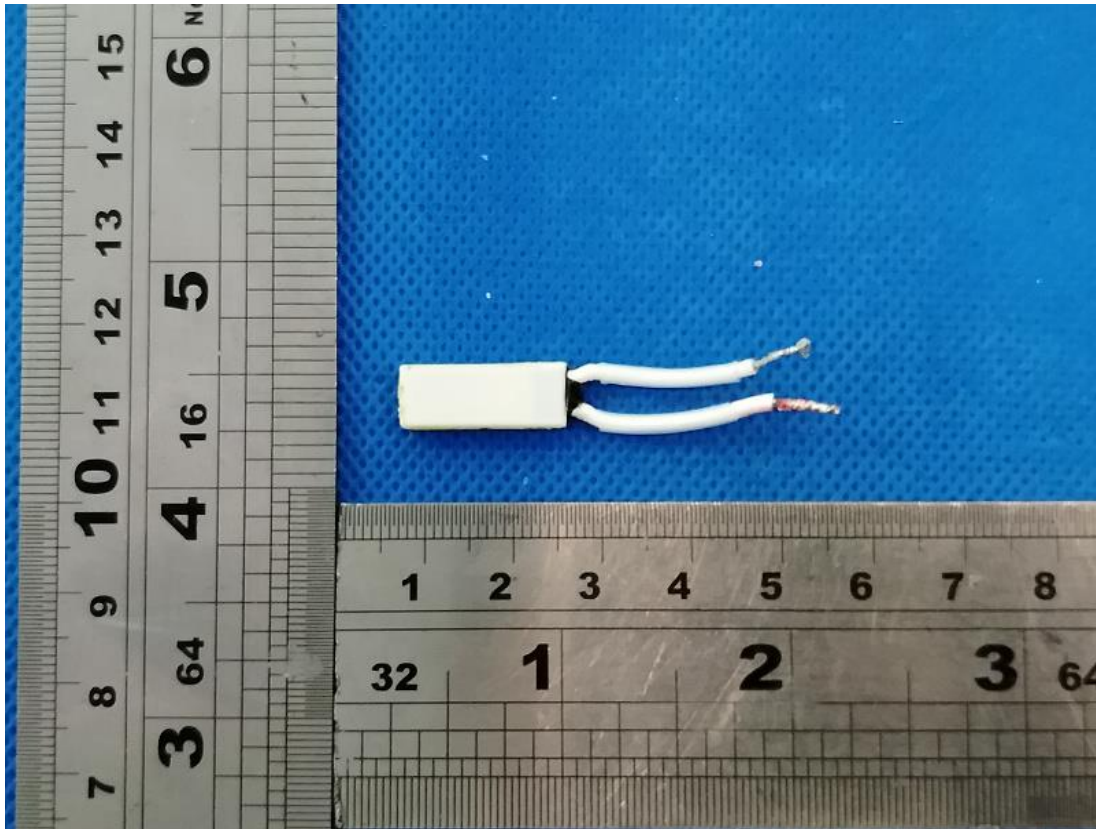


Picture 64.



Product: LINE ARRAY SPEAKER SYSTEMS

Type Designation: See test report



Picture 65.



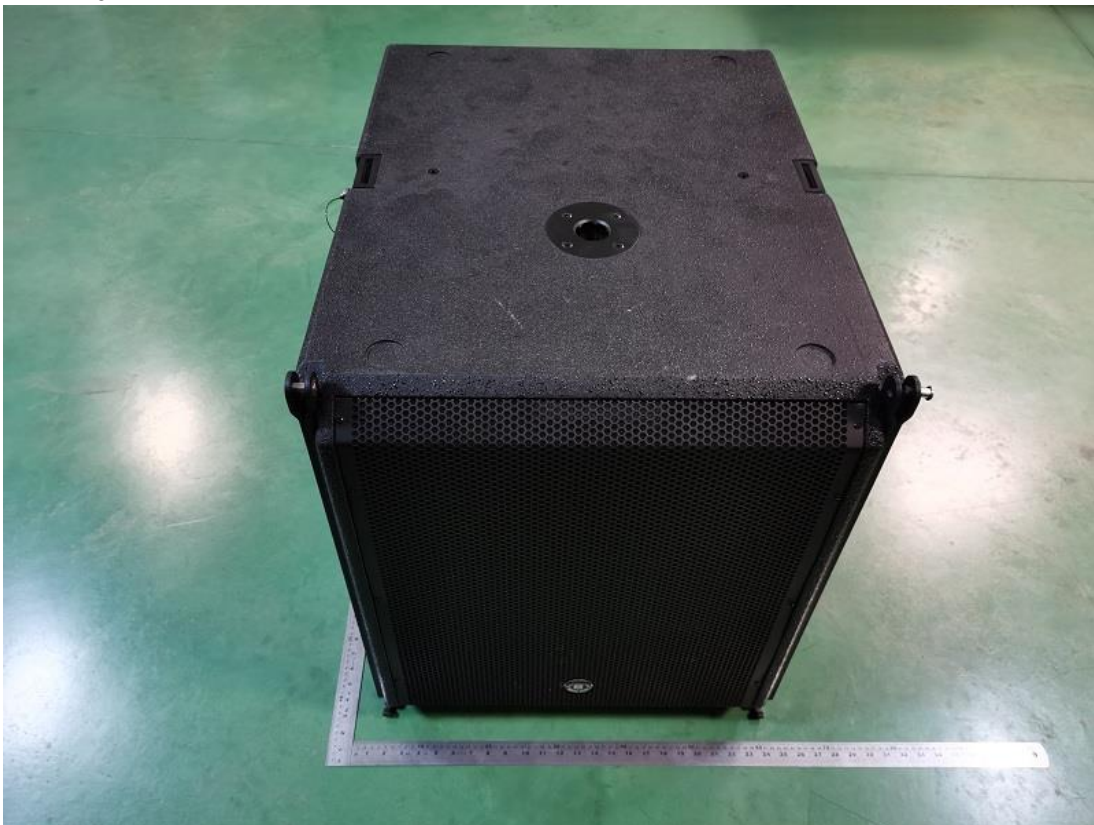
Picture 66. Model L-ARRAY 18S

Product: LINE ARRAY SPEAKER SYSTEMS

Type Designation: See test report



Picture 67.

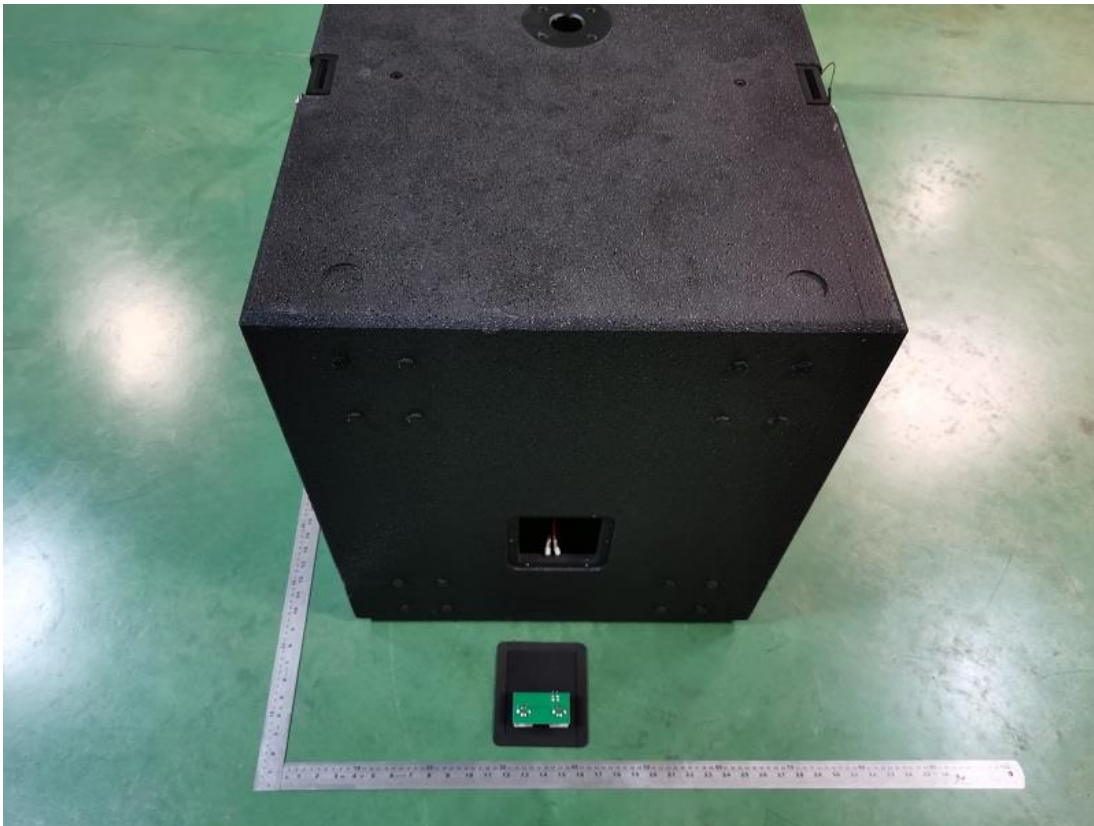


Picture 68.



Product: LINE ARRAY SPEAKER SYSTEMS

Type Designation: See test report



Picture 69.



Picture 70.

Product: LINE ARRAY SPEAKER SYSTEMS

Type Designation: See test report



Picture 71.

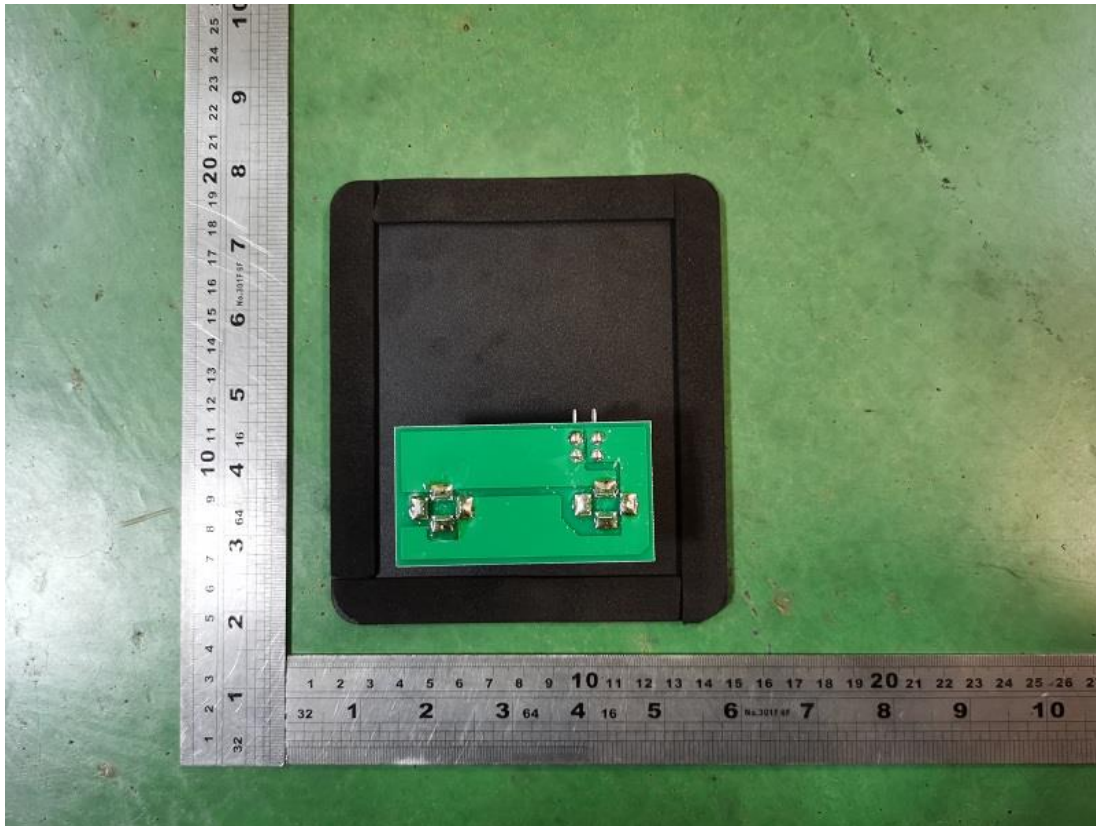


Picture 72.



Product: LINE ARRAY SPEAKER SYSTEMS

Type Designation: See test report



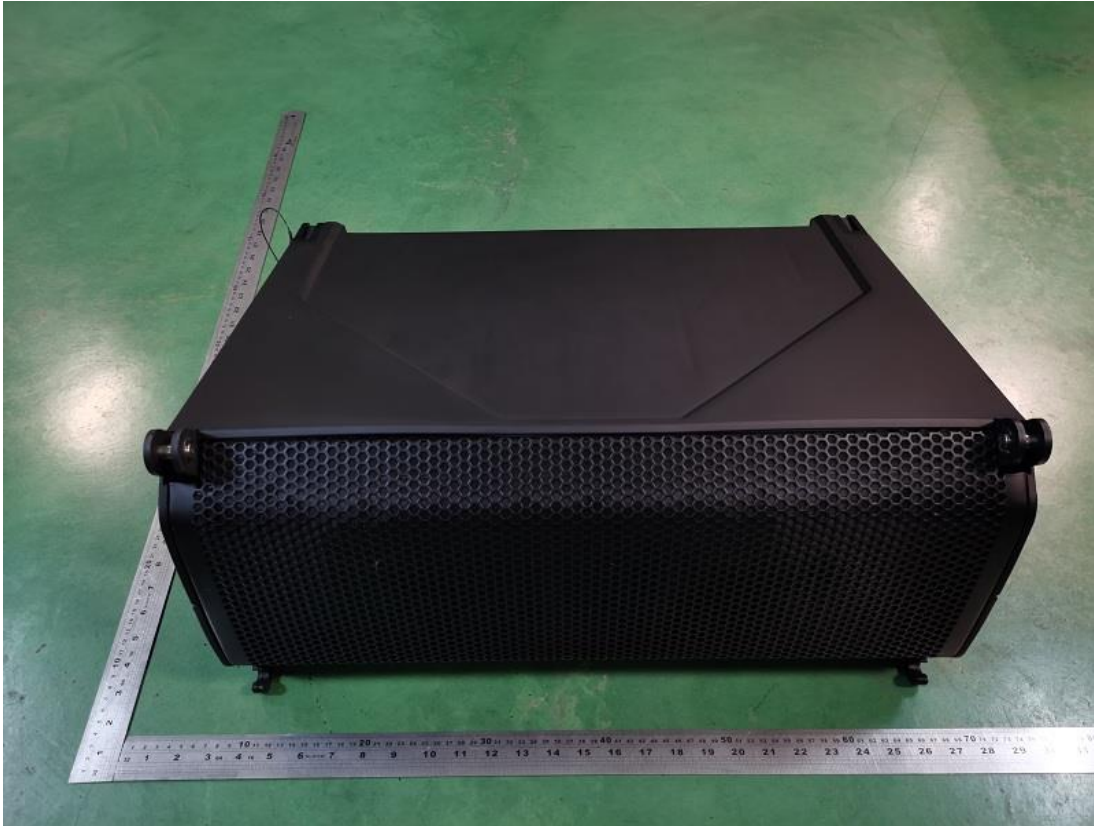
Picture 73.



Picture 74. Model L-ARRAY 28H

Product: LINE ARRAY SPEAKER SYSTEMS

Type Designation: See test report



Picture 75.



Picture 76.

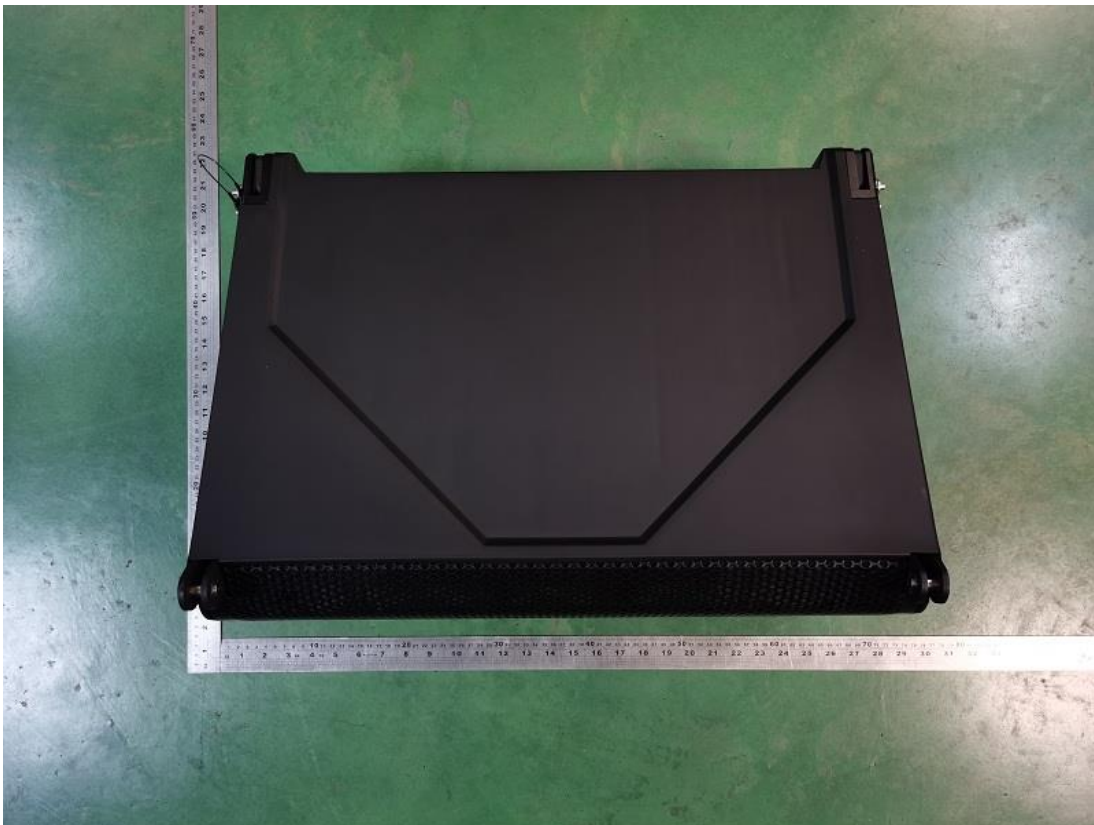


Product: LINE ARRAY SPEAKER SYSTEMS

Type Designation: See test report



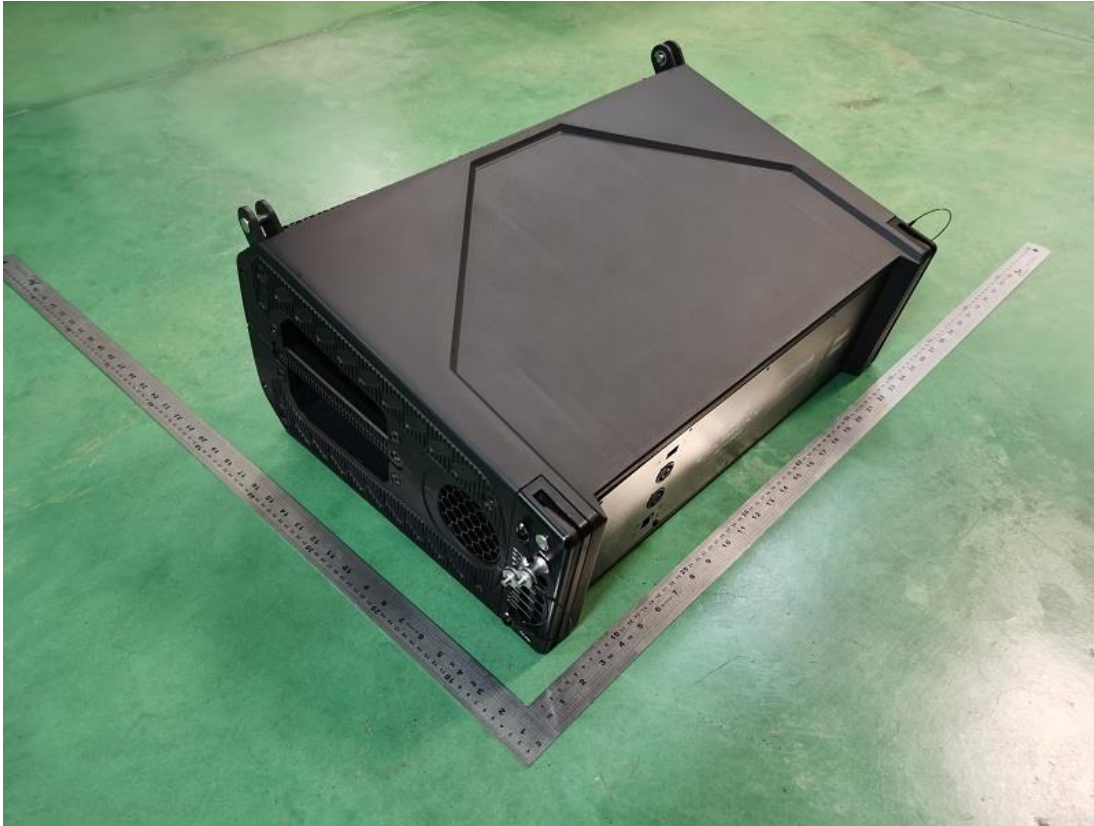
Picture 77.



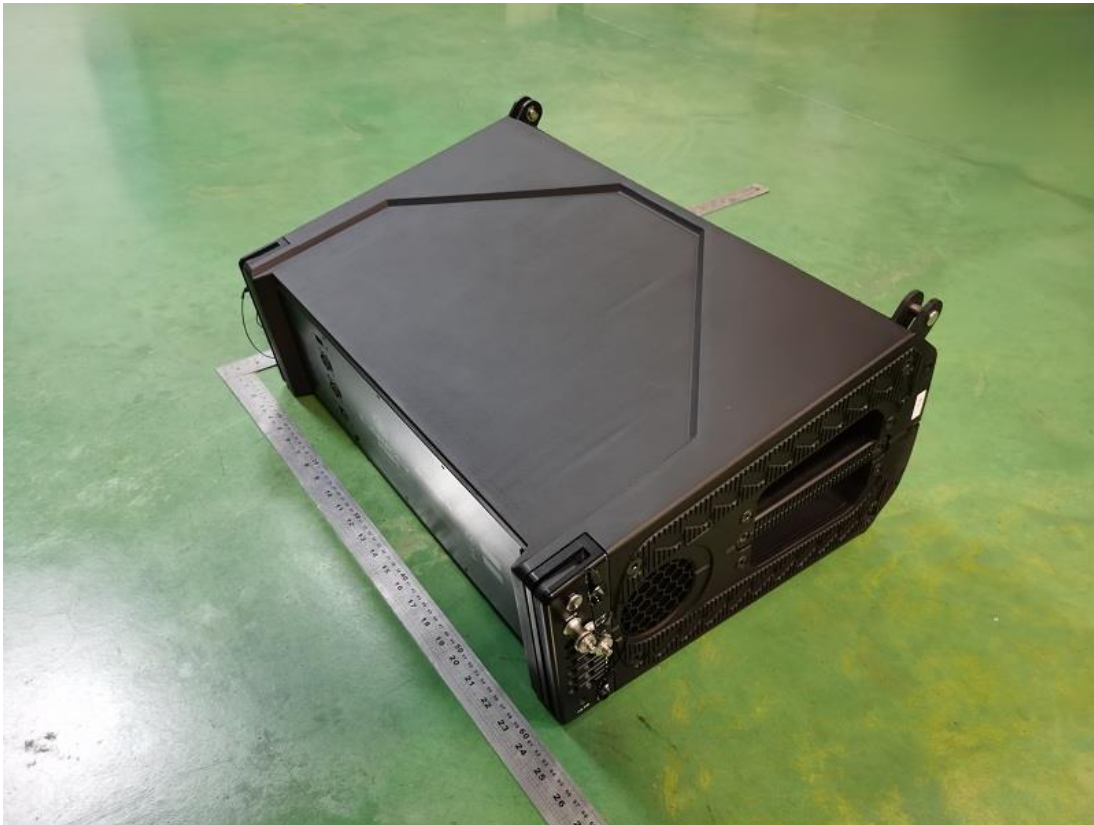
Picture 78.

Product: LINE ARRAY SPEAKER SYSTEMS

Type Designation: See test report



Picture 79.



Picture 80.

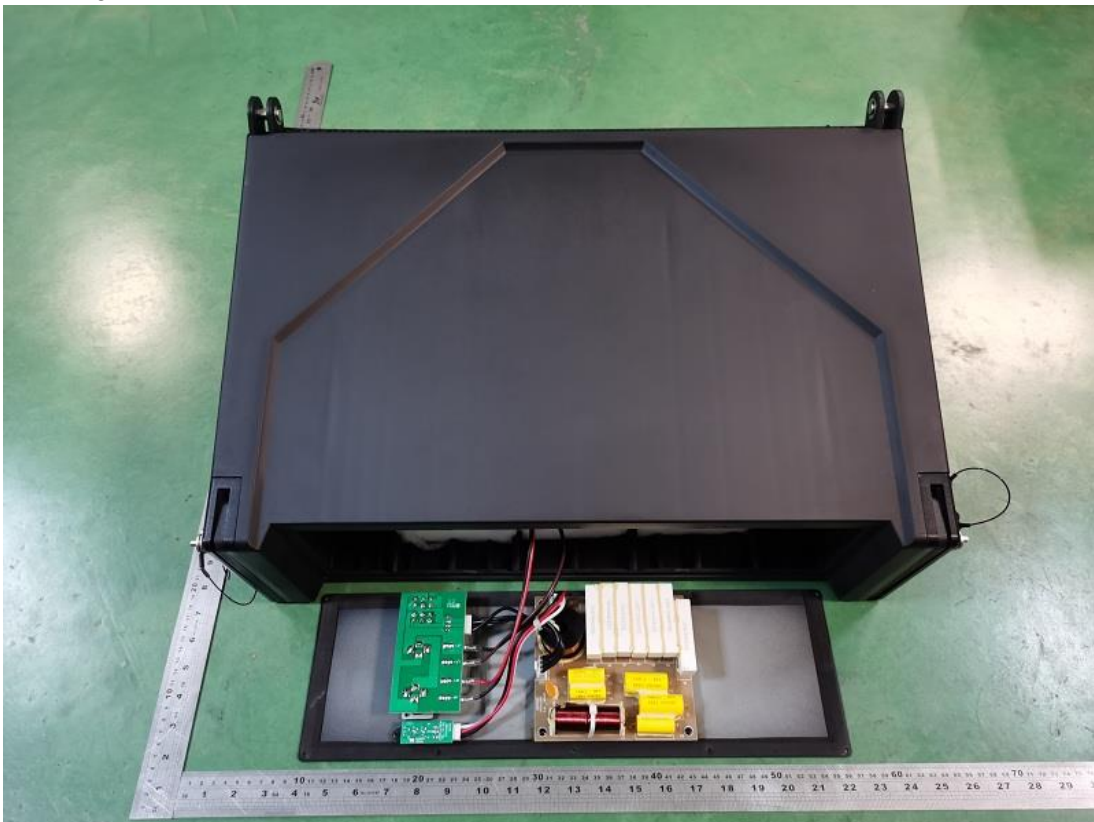


Product: LINE ARRAY SPEAKER SYSTEMS

Type Designation: See test report



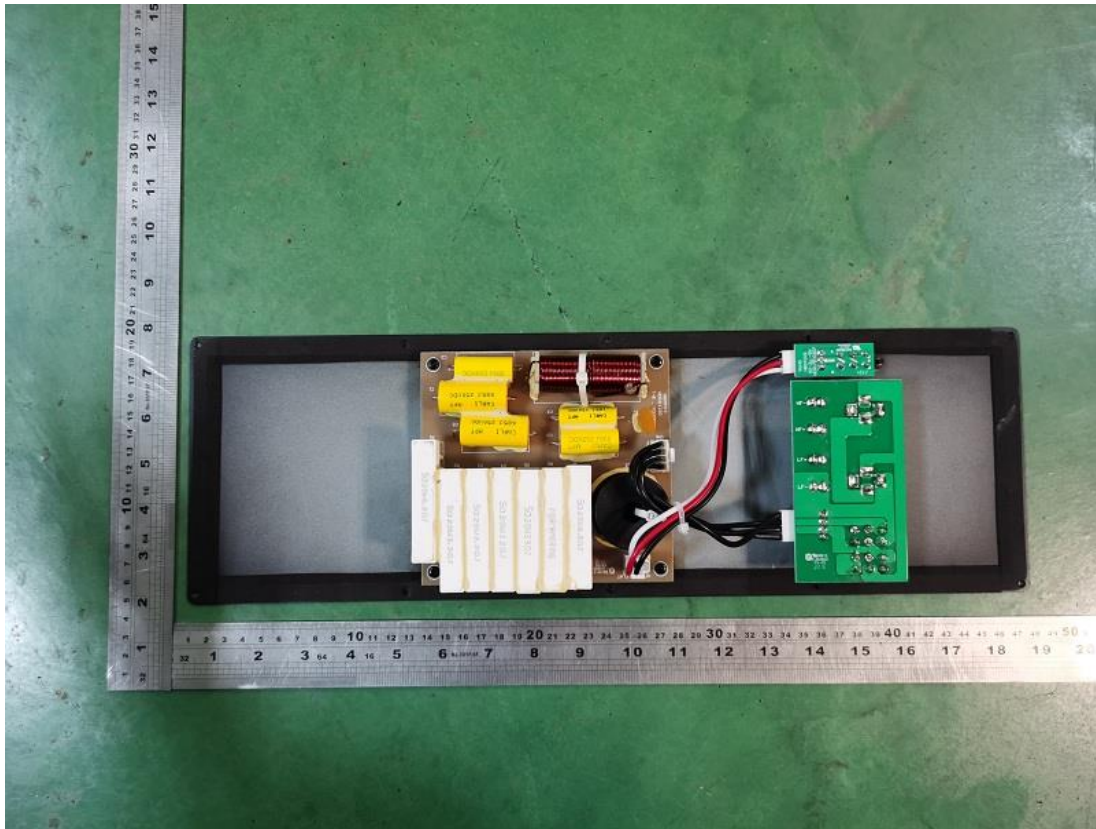
Picture 81.



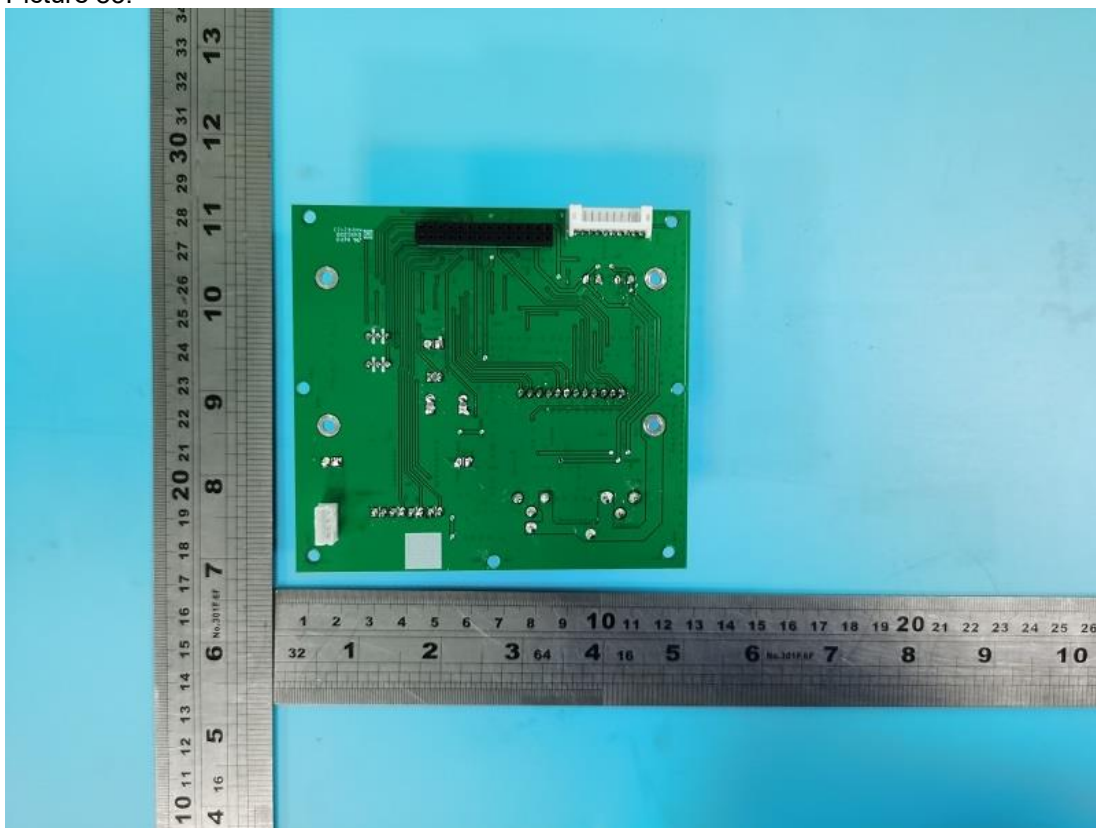
Picture 82.

Product: LINE ARRAY SPEAKER SYSTEMS

Type Designation: See test report



Picture 83.

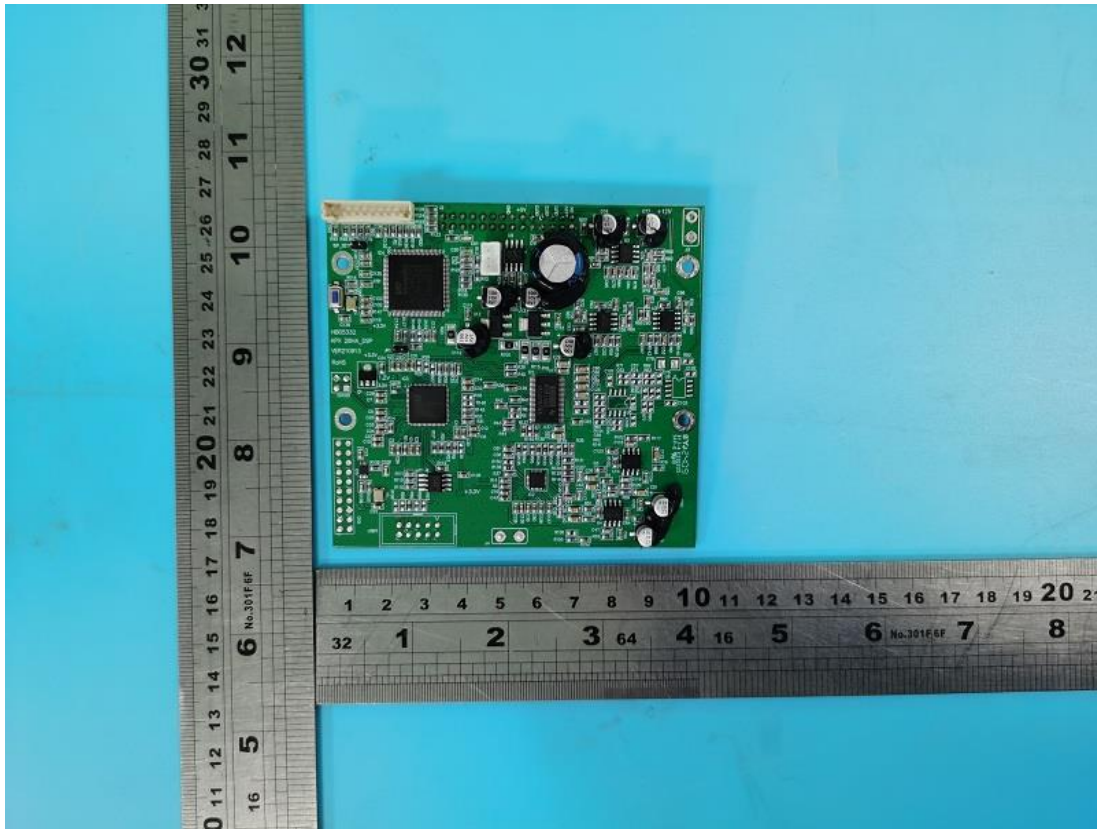


Picture 84. PC board

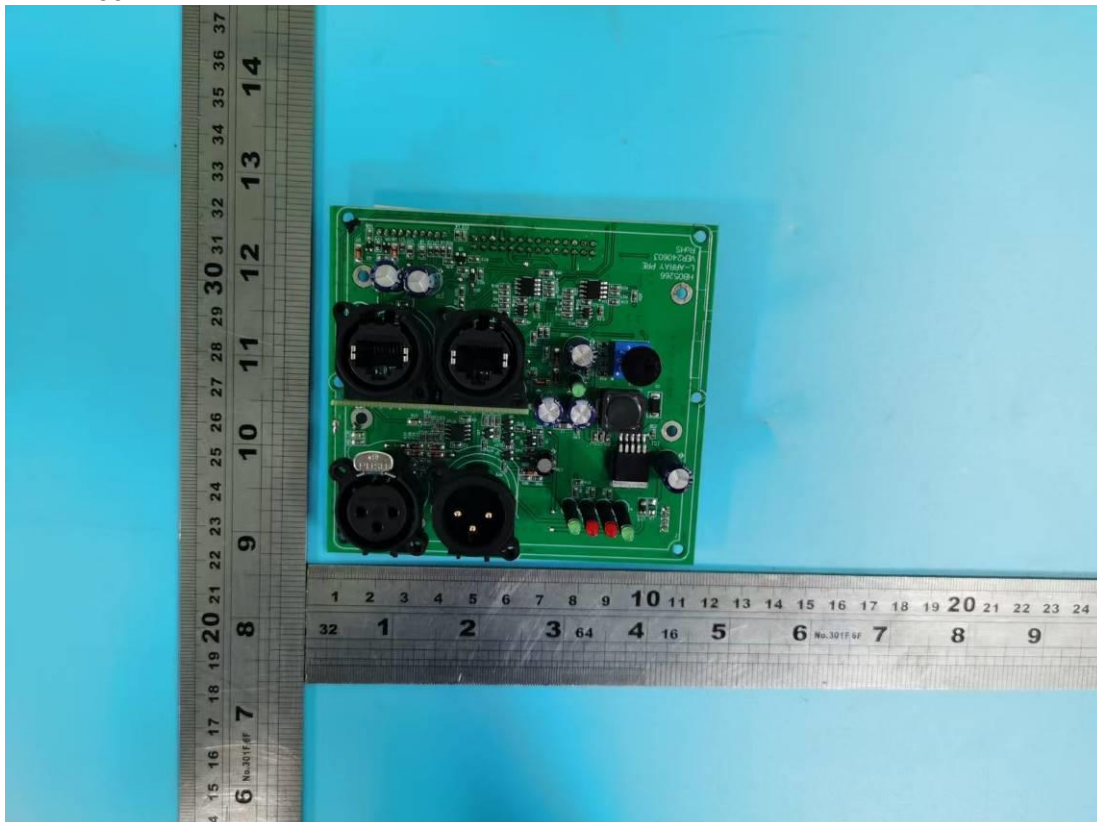


Product: LINE ARRAY SPEAKER SYSTEMS

Type Designation: See test report



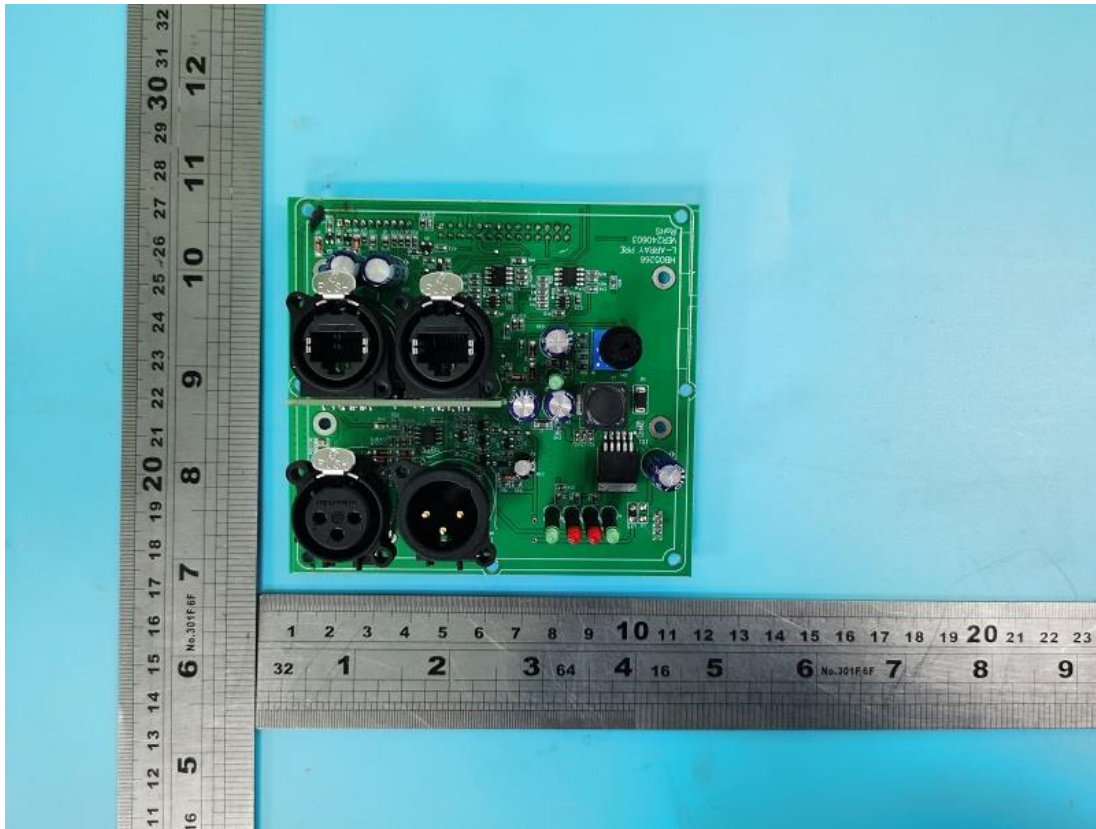
Picture 85.



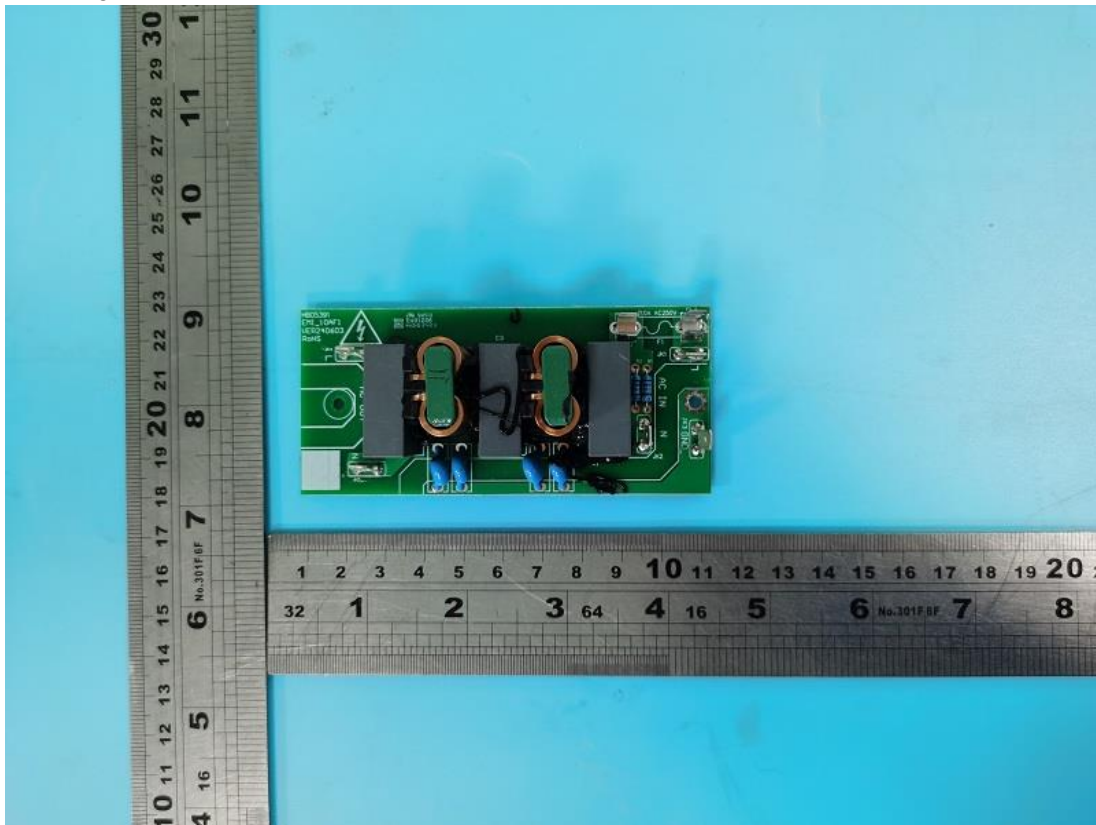
Picture 86.

Product: LINE ARRAY SPEAKER SYSTEMS

Type Designation: See test report



Picture 87.

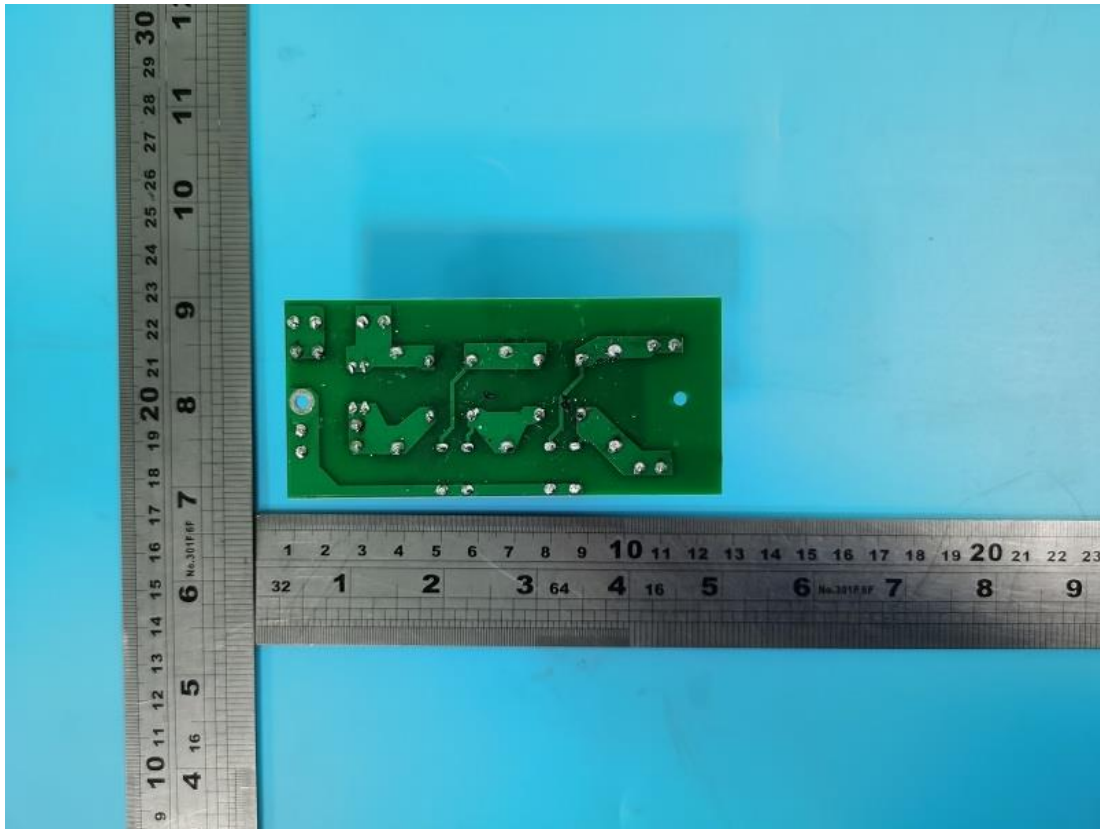


Picture 88. EMI board



Product: LINE ARRAY SPEAKER SYSTEMS

Type Designation: See test report



Picture 89.